

Fully Automatic Stainer and Coverslipper

AI Intelligent Staining and Coverslipping System





Fully Automatic Stainer and Coverslipper

Automatically complete the staining and coverslipping process

Advanced servo robotic arm technology

Intelligent staining reagent management system

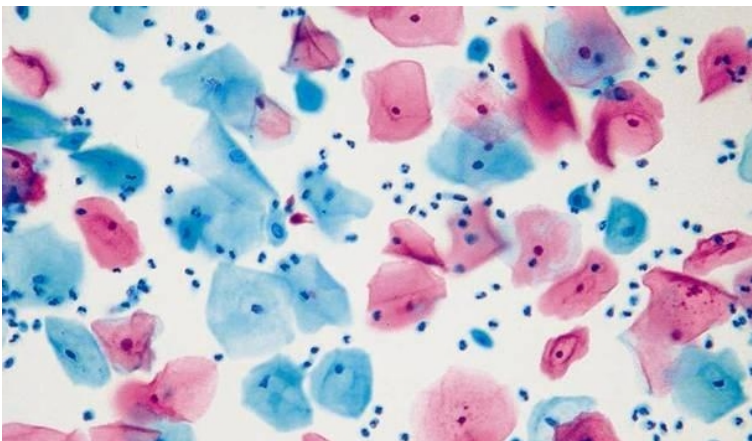
Parameter

	Triple Row	Double Row
	Staining up to 500 sheets/h Coverslipping up to 400 sheets/h	Staining up to 400 sheets/h Coverslipping up to 400 sheets/h
Size	Stainer(double row): 1073*667*651mm Stainer(triple row): 1073*800*648mm Coverslipper: 849*733*651mm	
Net Weight	Stainer(double row): 105 kg Stainer(triple row): 118 kg Coverslipper: 89 kg	
Rated Power	Stainer(double row): 800w Stainer(triple row): 800w Coverslipper: 800w	
Qty of Staining Stations	Stainer(double row): 26 Stainer(triple row): 39	
Single Cylinder Capacity	480ML+20ML	
Fixed Memory Capacity	≥ 200 programs	
Maximum Stainings One Time	30 pcs/time	
Input	AC220V 50Hz	

Stainer Feature



- It can perform Pap and HE freezing staining separately or simultaneously, and can run up to 11 different programs at the same time, with a staining capacity of up to 360 slides per hour.
- Fully enclosed stainer, with two exhaust gas concentration monitoring sensors before and after filtration, the concentration monitoring range can be set from 0-100ppm
- It can form an integrated staining and coverslipping workstation with the coverslipper, and the slides can be directly sent to the coverslipper without a separate transfer device
- Reagent management reminders are marked in green, yellow and red on the main interface; Multi-dimensional query of change records and reagent usage statistics function
- The double row stainer has 26 stations, and the triple row stainer has 39 stations, including reagent stations, water washing stations, water tank stations, oven stations, loading/unloading stations, and transfer stations.
- The three-axis robotic arm can be positioned stably and precisely, and the 90° robotic arm can smoothly and efficiently immerse the staining rack.
- Precisely control the time, strictly control the staining quality, and monitor the reagent status in real time to ensure high-quality staining.
- The liquid is shaken and the hydrophobic slide rack reduces contamination and improves the staining effect.
- PBT staining rack, corrosion-resistant, stable loading of 30 pcs, easy to extract.
- After staining, the slides are transported to the coverslipper on an efficient track, and the integrated process improves efficiency.



Coverslipper Feature



- Compatible with at least 4 brands of slide racks, slides, coverslips, and sealants on the market, and can also be used for glue-free coverslipping.
- Intelligently detect the remaining number of coverslips and remove broken slides, and issue alarm reminders through voice or color settings

Advantages of glue dripping and coverslipping

- Glue dispensing: The robot arm delivers the glass slide to the glue dispensing port, and the probe extends to dispense glue accurately, with high efficiency and precision
- Pressing: After the glue is applied, the robot moves the slide to the coverslip position, and the coverslip falls accurately and tightly.
- Quality: stable, no bubbles, uniform glue dripping
- Effect: Excellent quality, clear details, stable and reliable quality



Advantages of transmission and slide tray

- **Transport:** The robot arm transports the coverslipped slides quickly and accurately to the designated slide tray area, ensuring efficient process.
- **Slide tray load capacity:** 20 slides, 6 layers in total, can load 120 slides.
- **Slide tray design:** With buffer design, the slides can be placed without causing damage to them.
- **Slide tray extraction efficiency:** The slide drying plate is directly output, which is convenient for slide reading and saves manpower. There is no need to manually take out and place the slides one by one in the mechanical warehouse, which significantly improves work efficiency.



Guangzhou Xiuwei Technology Co.,Ltd

Add: No.644 ShiBei Indust RD | Panyu | Guangzhou 511440

Tel: +86 (020) 34795897 Fax: +86 (020) 31031013

Web: www.xwlabware.com