

Let's Make Pathology More Easier



Pathology Product Supplier

- Operating room
- Obtaining a specimen
- Fixation
- Dehydration
- Embedding
- Paraffin block section
- Floatation/Drying
- Storage
- Cryosectioning
- Special staining
- IHC



Guangzhou XiuWei Technology Co., Ltd.

Tel : +86 (020) 31031012
Fax : +86 (020) 31031013
Add : R115, Building No.15, No.644 ShiBei Indust Road, Panyu, Guangzhou, China, 511440
Web: www.xwlabware.com www.gzxiuwei.com



Operating room

Consumables:

Sampling Bags	P03
Specimen Container	P06

Obtaining a specimen

Instrument :

Gross specimen imaging system	P09
Embedding cassette printer	P11
Bone band saw	P12

Consumables :

Manual Tissue Microarrayer	P17
CutMATE Forceps	P19
Dissection board	P20
Trimming Knife Handle	P21
Embedding Cassettes	P23

Dehydration

Instrument :

Tissue processor	P29
------------------	-----

Consumables:

Baskets	P32
---------	-----

Embedding

Instrument :

Paraffin Dispenser	P35
Electric tweezers	P35
Embedding center	P36
Wax Trimmer	P39

Consumables:

Paraffin wax	P40
Base mold	P41

Paraffin block section

Instrument :

Semi Paraffin Microtome	P45
Manual Microtome	P46
2 in 1 Slide & Embedding cassette printer	P49
Slide printer	P51
Water Bath-Slide Drier All-In-One workstation	P53
Tissue flotation water bath	P55
Slide Drying Hotplate	P57

Consumables:

Microtome Blade	P61
Cassette Clamp	P63
Slide	P64

Staining

Instrument :

Slide Stainer	P67
---------------	-----

Consumables:

Cover glass	P68
Slide storage box	P69
Cardboard Slide trays	P70
Staining Rack	P71
Staining jar	P72

Cryosectioning

Instrument :

Cryoembedding Freezer	P75
-----------------------	-----

Consumables:

Cryostat Specimen disc	P76
------------------------	-----

Storage

Instrument :

Storage Systems	P81
-----------------	-----

Operating Room



Sampling Bags

Made of composite materials, effective resistance to chemical erosion, wear resistance to fall, 7 kinds of specifications can be selected

Suitable for hospital operating room, pathology department, criminal investigation and forensic medicine, etc

Feature:

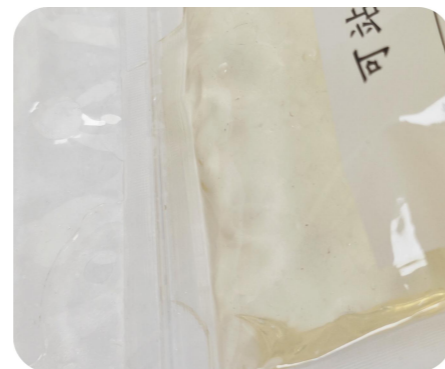
- Leak-tight double zipper and side seals for added security.
- With a labels in front for easy labeling without the hassle.
- Manufactured with virgin polyethylene for superb strength and clarity.
- The bag is lightweight and stands upright by itself, allowing for more convenient sampling and testing.
- Incorporate a zipper locking specimen compartment and information note for safely transfer specimens and paperwork.



Three-dimensional structure.



Stand up design



Leak-tight double zipper

Paramete

Prod #	Unit	Dimensions (mm)	Packaging
XW-BBD-001	Pcs	290x375mm	400Pcs/pk
XW-BBD-002	Pcs	210x315mm	800Pcs/pk
XW-BBD-003	Pcs	180x250mm	1200Pcs/pk
XW-BBD-004	Pcs	140x220mm	2100Pcs/pk
XW-BBD-005	Pcs	125x180mm	3000Pcs/pk
XW-BBD-006	Pcs	100x160mm	4000Pcs/pk
XW-BBD-007	Pcs	96x110mm	5000Pcs/pk
XW-BBD-008	Pcs	120x200mm	1400Pcs/pk
XW-BBD-009	Pcs	200x300mm	1000Pcs/pk
XW-BBD-010	Pcs	250x330mm	600Pcs/pk



Specimen Container

Used in the storage and transportation of tissue in hospital operating room, pathology Room, criminal investigation and forensic medicine, CDC etc.

Paramete

Prod #	Unit	Dimensions (mm)	Packaging
XW-BBD-001J	Pcs	255x318mm	800Pcs/pk
XW-BBD-002J	Pcs	255x270mm	700Pcs/pk
XW-BBD-003J	Pcs	158x194mm	1500Pcs/pk
XW-BBD-004J	Pcs	100x127mm	3300Pcs/pk
XW-BBD-005J	Pcs	70x91mm	5000Pcs/pk



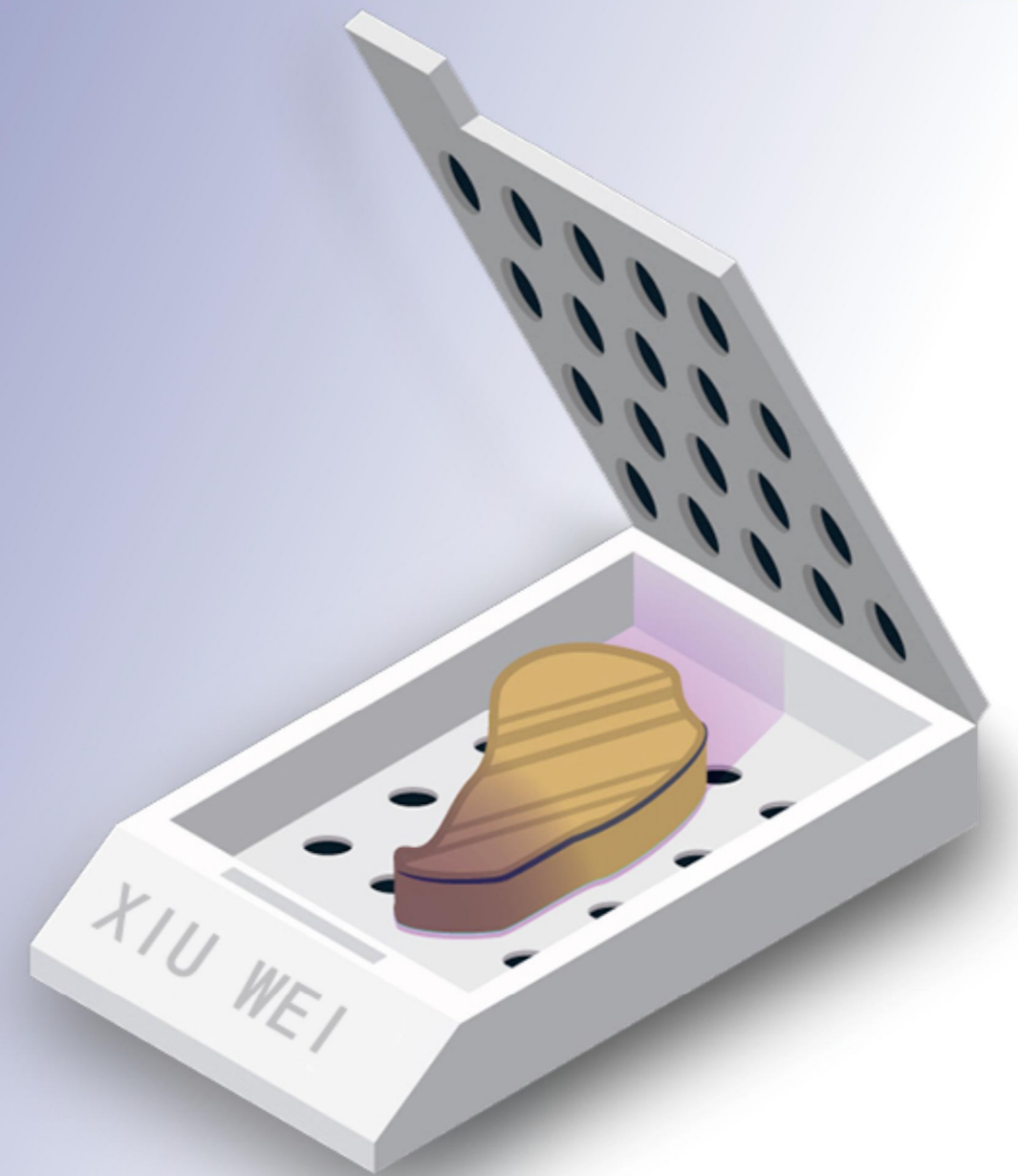
With label



Prod #	Unit	Dimensions	Packaging
XW-BBP-001	7500ml	22*28cm	30Pcs/bag
XW-BBP-002	4000ml	18*21cm	50Pcs/bag
XW-BBP-003	2000ml	18*11cm	50Pcs/bag
XW-BBP-004	1000ml	12*12cm	50Pcs/bag
XW-BBP-005	500ml	10*10cm	50Pcs/bag
XW-BBP-006	120ml	5*8cm	250Pcs/bag
XW-BBP-007	100ml	5*7cm	250Pcs/bag
XW-BBP-008	60ml	4*4cm	35Pcs/bag
XW-BBP-009	40ml	3.5*6cm	20Pcs/bag
XW-BBP-010	20ml	3*4cm	100Pcs/bag
XW-BBP-011	15ml	2.5*5cm	100Pcs/bag
XW-BBP-012	5ml	1.5*5.6cm	1000Pcs/bag



Obtaining a Specimen



Gross Specimen Imaging System

- Picture pixel: 24 million
- Sensor size: 36mm*24mm
- Maximum resolution: 6000*4000
- Optical zoom: 14 times (18-250 Zoom range)
- Maximum aperture: F3.5-F5.6
- Voice control function: Automatically recognize the voice for zoom in, zoom out and take pictures
- Control system: Computer control, foot switch control image zoom, zoom, zoom, take pictures
- Power system: External power control switch, LED light indicates the working state.
- Range of adjustment: 600mm

- Software Functions: Software can be real time and rapid measurement, support the live view display, supports text input, automatic calibration, automatic measurement area, perimeter, length, multiple labeling, cutting, for ESD specimens form size, size, area, perimeter, ctual measurement, also may carry on the annotation of lesion location, size, lesion location recovery and accurate positioning, Delineate mucosal pedigree.
- The main machine can be directly connected with the computer, the software control camera aperture, photography speed, white balance, sensitivity, zoom image magnification, zoom, focus and video shooting; Real-time view display, seamless connection with hospital HIS, PACS system.



F2000D

Embedding Cassette Printer

Customized your own printer

- Input Capacity: 1-12 Hoppers(options)
- Printing Technology: Infrared / Ultraviolet Lase
- Built-in display screen / USB cable to the computer
- Two channel operation / One channel operation
- Optional: large-capacity collecting tray, scanning gun



(8 hoppers)

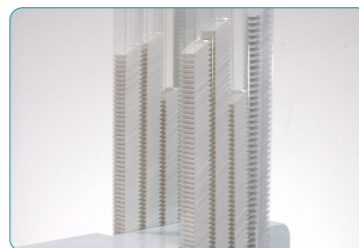
Feature:



No use of ink or ribbons needed



Two channel operation



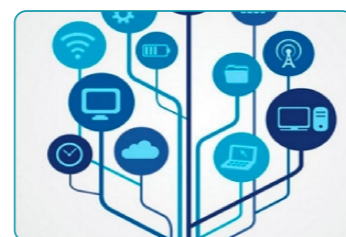
Large capacity input hopper



Print clearly



Alcohol, xylene resistant



Connected with HIS, LIS and PACS systems



(2 hoppers)



(6 hoppers)
With 100/200/500
collecting tray

Bone Band Saw

Use for Pathology department, orthopedic department, animal and plant research institute, centers for disease control and prevention, etc.

XW-SYQ-2600

Parameter

Dimensions: 470*240*420mm
Trimming thickness: 1-50mm
Bone slice thickness: 1.5mm



XW-QGJ-165

Parameter

Trimming thickness: 1-150mm Cutting board: 330*340mm
Power: 370W Voltage: 220V/50Hz
Revolving speed: 1400±10%/rpm Waterprotected: IP44
Bone slice length: 1712mm



- Simple and sturdy machine: safe and easy to use.
- Come with the splash guard cover, bone holder, and steel-mesh gloves.
- Other accessories available for purchase for bone band saw are: angle gauge, scaleplate and magnifying glass.

XW-QGJ-350plus

Parameter

Dimensions: 600*530*970mm Trimming thickness: 1-150mm
Cutting board: 600*437mm



- Uses the stainless steel structure for convenient cleaning
- Multi-functional and can be used to cut tissues with steel nails or plates
- Simple and sturdy machine: safe and easy to use.

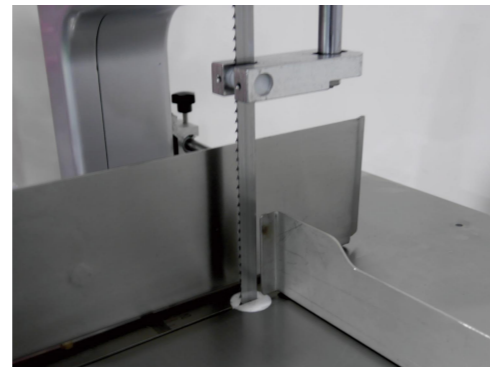
XW-QGJ-788

Parameter

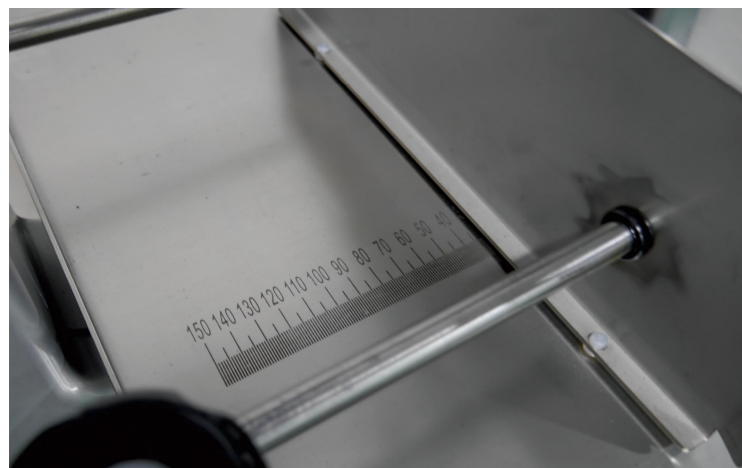
- Voltage: 220V/50Hz
- Working power: 750W
- LED light: 3W / 10~12V
- Dimensions: 800×800×1520 (mm)
- Push board: 220(W)×230(L) (mm)
- Variable speed range: 750-1500rpm
- Vfd capacity: 0.75kw
- Flushing gun: 12V / 160W
- Waste tray: 800×800 (mm)
- Working table: 700-900mm



- The working table can be raised and lowered by 20cm which is convenient for different heights of the users.
- LED lighting system is used to guarantee the safety of operator
- It come with a water gun for better cleaning of the table and prevention from cross-contamination.
- It can be used to cut about 180 kinds of different bone tissue, cutting thickness of 2~150mm.



Compatible with different blades, can be selected according to the size and shape of the bone specimen



XW-QGJ-Mini-1

- Rated Voltage: 220V, 50Hz, 250W
- Maximum cutting height: 60mm
- Maximum cutting width: 150mm
- Cutting board: 240*220mm
- Dimensions: 355*325*550mm
- Weight: 12kg

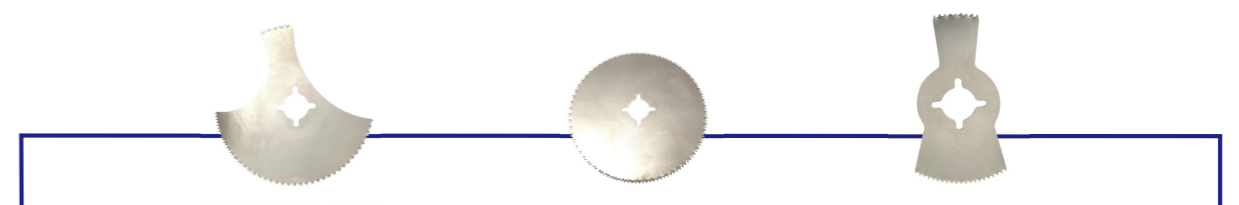
- Small volume, light weight, high stability.Suitable for the unit that handle with less amount of samples
- Attractive appearance,and easy to clean
- Instead of manually slicing , Bone band saw makes slicing more easier, saves time and effort



XW-QGJ-901

According to the clinical needs and the practicability of pathologists, a practical, convenient and efficient bone drawing tool is invented.

- Rated Voltage: 12V
- Swing frequency: 15000/min
- Pendulum angle: 2.8°
- Battery Type: Lithium battery
- Charging voltage: 220-240V
- Thermal range for charging: 5-40°C
- Weight: 0.8kg(No include battery)



XW-QGJ-220

Parameter

Trimming thickness: 1-150mm	Cutting board: 505*415mm
Working power: 750W	Voltage: 220V/50Hz
Bone slice width: 1712mm	Waterprotected: IP44

- The complete machine uses the stainless steel structure for convenient cleaning
- Simple and sturdy machine: safe and easy to use
- Multi-functional and can be used to cut tissues with steel nails
- High-power machine enabling you to achieve fast and effortless trimming.
- The lines design of Bone slice to prevents the splashed debris of the bone tissue. It also come with a waste tray helps you keep your workplace clean and debris-free.



XW-QGJ-680

Parameter

- Voltage: 220V/50Hz
- Working power: P2=550W
- Revolving speed: 0-1500rpm
- Cutting speed range: 0-730m/min
- Maximum cutting height: Left : 100mm/ right : 70mm
- Bone slice width: 3-12mm Throat diameter: 245mm
- Cutting board: 340*340mm
- Weight: 55kg



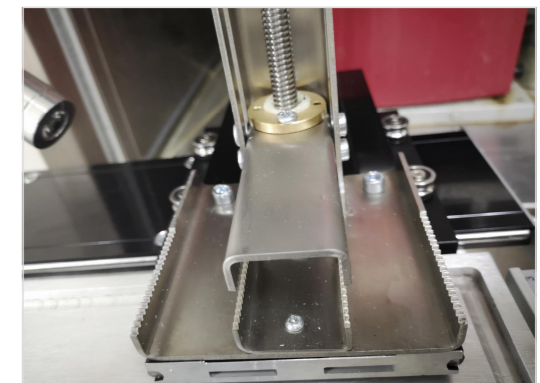
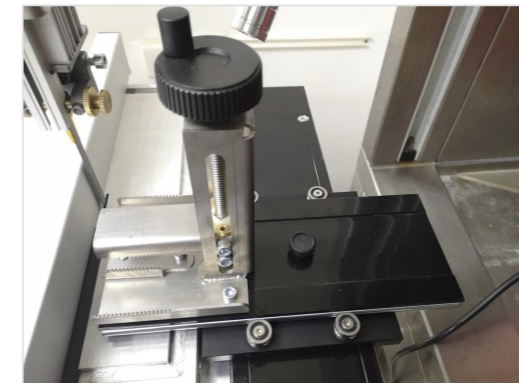
- New function of variable speed for safely trimming
- Multi-functional fixture can meet different clamping size requirements. . Its side rail is imported from Germany with more freely sliding and high accuracy up to 0.1mm
- The new workbench with CNC processing water collecting function.
- Its automatic water supply device has a rinsing jet to make it cleaner and more convenient
- Full waterproof motor and motor protection cover make it safer
- LED cold light source makes it possible to cut normally in poor lighting conditions
- Its laser indicator allows more accurate cutting

XW-QGJ-588

Parameter

Trimming thickness: 1-150mm	Cutting board: 505*415mm
Working power: 750W	Voltage : 220V/50Hz
LED light : 3W/10~12V	Revolving speed: 750-1500rpm

- The complete machine uses the stainless steel structure for convenient cleaning
- Multi-functional and can be used to cut tissues with steel nails
- The lines design of Bone slice to prevents the splashed debris of the bone tissue. It also come with a waste tray helps you keep your workplace clean and debris-free.



Manual Tissue Microarrayer

XW-1027

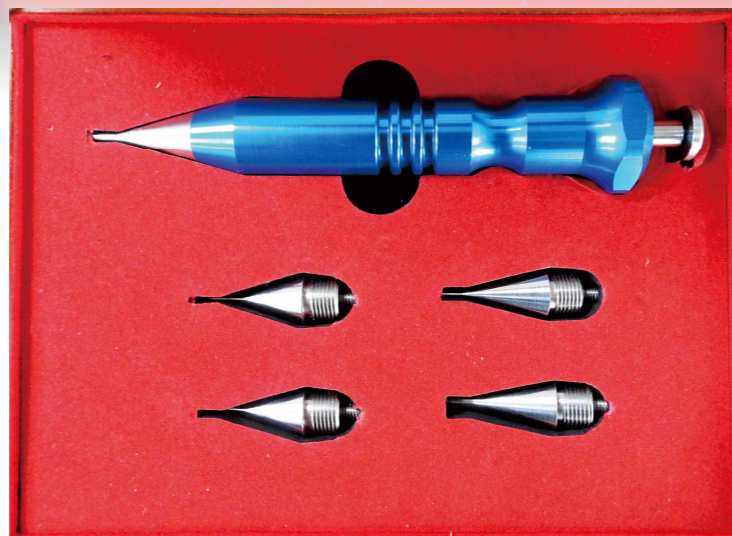
Specifications of the block

- 1.0mm in diameter, 120 cores
- 1.5mm in diameter, 90 cores
- 2mm in diameter, 60 cores
- 3mm in diameter, 30 cores
- 5mm in diameter, 20 cores
(Customized)

(Include: 5 coring needles, 1 punch extractor, 1 paraffin receipt block)

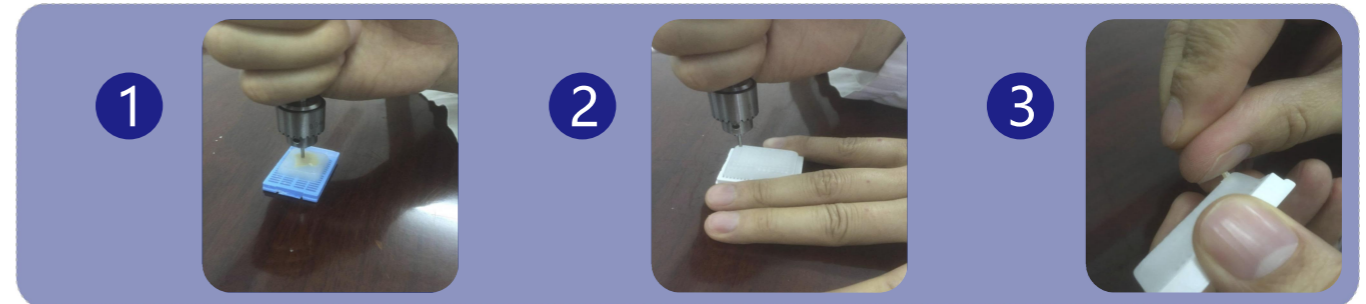
广州市秀威贸易有限公司
Guangzhou Xiuwei Commerce Co.,Ltd

组织芯片枪
Tissue Microarray



- Recipient paraffin block and cassette integrated design, the removed tissue can be observe and compare intensively in the same recipient paraffin block
- Simple operation, greatly enhance efficiency and observation accuracy
- Sampling hole and paraffin block size are customer request

How to use it?

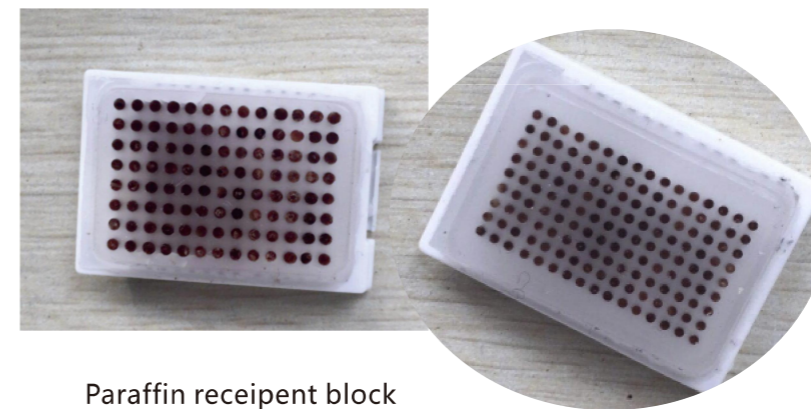


Step 1: Collect the tissue

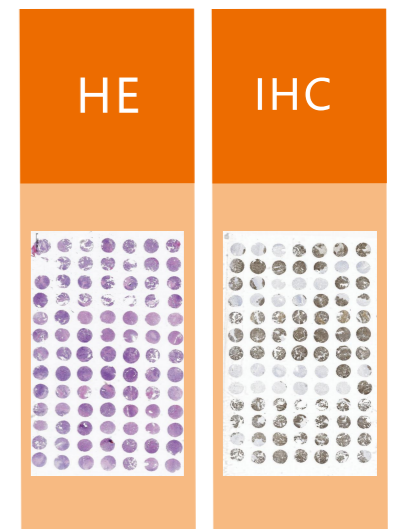
Step 2: Inplant the tissue to the paraffin

Step 3: Push the tissue, make it flat

HE&IHC



Paraffin receipt block

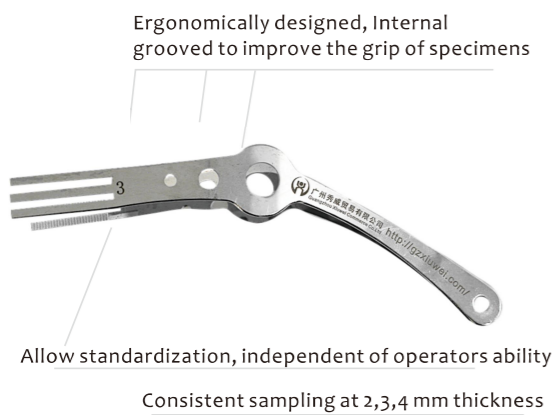


Production effect

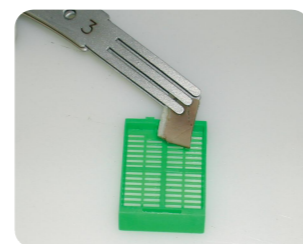
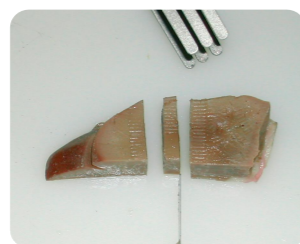
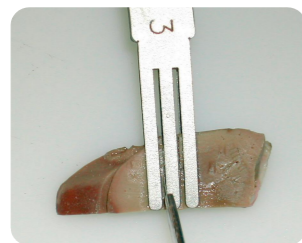
CUTMATE Forceps



- Used for standardized pathological trimming, can be use with 007 blade hadle
- Spacing control, tissue thickness standardization;
- There are 4 specifications available, 2mm, 3mm, 4mm, 5mm

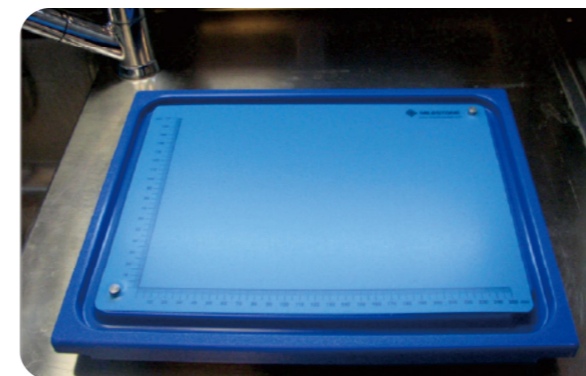
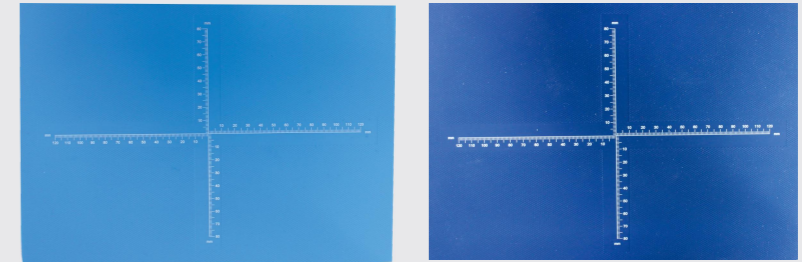


Model NO.	Detail	Size
XW-QCN-001-2	Single row	2mm space
XW-QCN-001-3		3mm space
XW-QCN-001-4		4mm space
XW-QCN-001-5		5mm space
XW-QCN-002-2	Double row	2mm space
XW-QCN-002-3		3mm space
XW-QCN-002-4		4mm space
XW-QCN-002-5		5mm space
XW-QCN-003-2	Triplex row	2mm space
XW-QCN-003-3		3mm space
XW-QCN-003-4		4mm space
XW-QCN-003-5		5mm space
XW-QCN-004-2	Four row	2mm space
XW-QCN-004-3		3mm space
XW-QCN-004-4		4mm space
XW-QCN-004-5		5mm space
XW-QCN-005	Multi	2, 3, 4, 5mm 4 space in one pcs



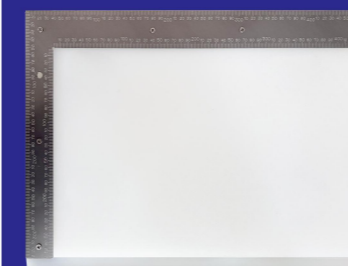
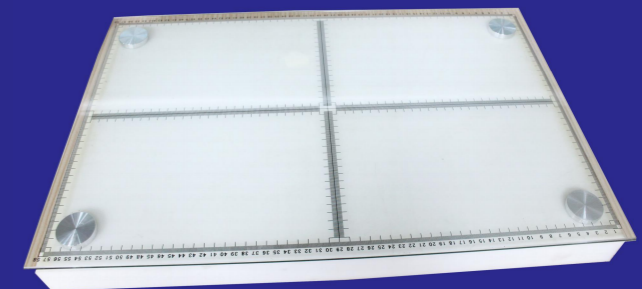
Dissection Board

- Model NO.: XW-QCB-001
XW-QCB-002
- Material: Rubber
- Color: Sky blue, dark blue
- Size: A4/A3
- Note: with scale



- Model NO.: XW-QCB-003
- Material: Plastic
- Color: Blue
- Size: A4
- Note: with scale

- Model NO.: XW-QCB-004
- Material: Glass
- Color: White
- Size: 38 cm * 58 cm
- Note: with scale



- Model NO.: XW-QCB-005
- Material: Plastic
- Color: White
- Size: 40*30*2cm
- Note: with scale, with base without scale

Trimming Knife Handle

Single row

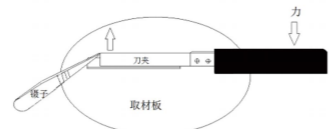
Model NO.	Information
XW-DB-001	Plastic,use with low profile
XW-DB-002	wooden,use with low profile
XW-DB-003	Plastic,use with high profile
XW-DB-004	Plastic,use with surgical blades
XW-DB-006	Plastic,use with low profile,large tissue



Single row(updated version)

- For the sampling of tissue specimens in pathology department
- Double - sided scale of knife clip can be taken while measuring
- Suitable for different tissue materials
- The 007 handel is repalceable, saving costs
- 008~011 universal can be exchanged into ceramic knife, steel knife, blade holder

Model NO.	Information
XW-DB-007	Plastic,use with low profile
XW-DB-008	Replaceable, plastic,use with low profile
XW-DB-009	Replaceable, plastic,use with high profile
XW-DB-010	Replaceable, plastic,use with steel knife
XW-DB-011	Replaceable, plastic,use with ceramic knife



Double row

Model NO.	Information
XW-DB-005	Double row with scale, narrow blade, plastic handle, 2-5mm space optional



XW-DB-005

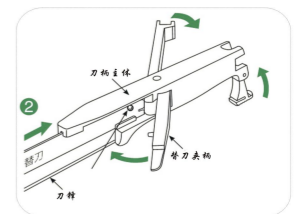
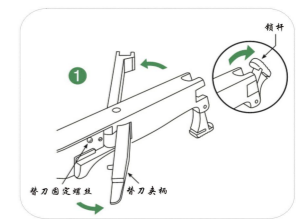
Double row(updated version)

- It is used for tissue specimen sampling in pathology department, especially for easily contractile tissue such as cyst wall
- Can be used with standardized sampling tweezers
- Double - sided scale of knife clip can be taken while measuring
- Fixed spacing, 2, 3, 4, 5mm
- Two knife is advisable, save time and effort, complete materials, avoid tissue contraction
- The knife clip part can be replaced, easy to install the blade, can be used single knife, can also be used double knife



XW-DB-012

Model NO.	Information
XW-DB-012	Use with low profile,2mm space
XW-DB-013	Use with high profile,2mm space
XW-DB-014	Use with low profile,3mm space
XW-DB-015	Use with high profile,3mm space
XW-DB-016	Use with low profile,4mm space
XW-DB-017	Use with high profile,4mm space
XW-DB-018	Use with low profile,5mm space
XW-DB-019	Use with high profile,5mm space



Embedding Cassettes

Embedding cassettes without lid		
XW-BMH-001	XW-BMH-002	XW-BMH-VIP-054

Embedding cassettes with lid		
One-piece		
XW-BMH-003	XW-BMH-071	XW-BMH-061

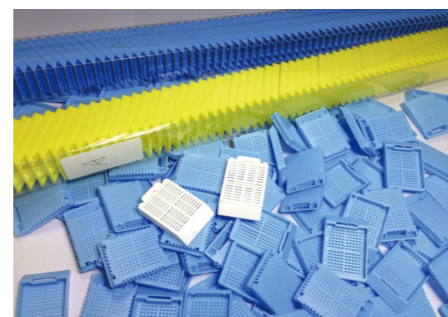
Two-piece	
Open in front	Open on back
XW-BMH-053	XW-BMH-020
XW-BMH-055	XW-BMH-021
XW-BMH-070	XW-BMH-051
	XW-BMH-052
	XW-BMH-056
	XW-BMH-058

Printer use		
XW-BMH-051	XW-BMH-052	XW-BMH-057
XW-BMH-058	XW-BMH-060	XW-BMH-070
XW-BMH-071		

Special	
XW-BMH-017	(high raise 12mm)
XW-BMH-018	Extra-large (5*8*2cm)
XW-BMH-026	(Mini)
XW-BMH-048	Copper dehydration box



Print effect



Embedding cassette sleeve for marking printer

Embedding Cassettes

- Used for tissue dehydration, wax immersion and embedding in pathology department
- POM material, with good solvent resistance, oil resistance, resistance to weak acid, weak alkali
- Color can be customized

Without lid
XW-BMH-001
XW-BMH-002
XW-BMH-VIP-054



XW-BMH-001
(5600/CTN)



XW-BMH-002
(4800/CTN)



XW-BMH-VIP-054
(4800/CTN)

With lid
XWBMH003
XW-BMH-071
XW-BMH-061



XW-BMH-003



XW-BMH-071



XW-BMH-061

Two-piece Open in front
XW-BMH-053
XW-BMH-055
XW-BMH-059
XW-BMH-070



XW-BMH-053



XW-BMH-055(小孔)



XW-BMH-059

Embedding Cassettes

Two-piece Open on back
XW-BMH-020
XW-BMH-021
XW-BMH-051
XW-BMH-052
XW-BMH-056
XW-BMH-058



XW-BMH-020



XW-BMH-021



XW-BMH-051



XW-BMH-052



XW-BMH-056



XW-BMH-058

Printer use
XW-BMH-047
XW-BMH-051
XW-BMH-052
XW-BMH-057
XW-BMH-058
XW-BMH-059
XW-BMH-060
XW-BMH-070
XW-BMH-071



XW-BMH-047



XW-BMH-070



XW-BMH-071



XW-BMH-057



XW-BMH-058



XW-BMH-060

Embedding Cassettes

Biopsy Cassettes
XW-BMH-043
XW-BMH-045
XW-BMH-056
XW-BMH-073



XW-BMH-043



XW-BMH-045



XW-BMH-073

Special
XWBMH017
XW-BMH-018
XW-BMH-026
XW-BMH-048
XW-BMH-072
XW-BMH-074
XW-BMH-075
XW-BMH-076



XW-BMH-072



XW-BMH-013
(raised by 9mm)



XW-BMH-017
(raised by 12mm)



XW-BMH-026
(Mini)



XW-BMH-048



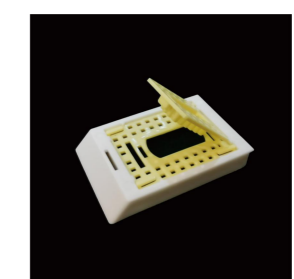
XW-BMH-018
(Extra-large)



XW-BMH-074



XW-BMH-075



XW-BMH-076

Dehydration



Tissue Processor



T. Series

Regular Fully Enclosed Tissue Processor

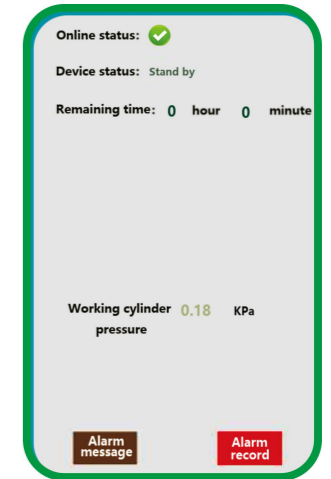
- Colour touch screen and keypad dual control
- Blue reagent tank working indicator
- Normal temperature and pressure, heating, positive and negative pressure alternating modes
- Patented anti-clogging pipeline design system
- Verified by the third party authority and a number of users, the processing effect is guaranteed.



AI. Series

Smart Fully Enclosed Tissue Processor

- Intelligent dual system automatic switching and prompting
- Remote mobile phone /computer monitoring, real-time display of the operating state, with curves and numerical values to restore and analyse the historical operating state, to determine the causes of abnormal dehydration and wax dipping.
- Dehydration programmes are captured and stored within 1 minute, 16 intelligent dewatering programmes can be expanded with more than one programme.



ST. Series

Twin-core Fully Enclosed Tissue Processor

- Automatic switching and prompting of the dual system, double insurance guarantee, protection of the specimen from running the dehydration
- Dual heating and temperature measurement for reagent tank, wax tank and dispensing valves
- In case of failure, the instrument automatically activates the back-up system, the dewatering process is continuous and uninterrupted, protecting the safety of specimens from being affected.



BM. Series

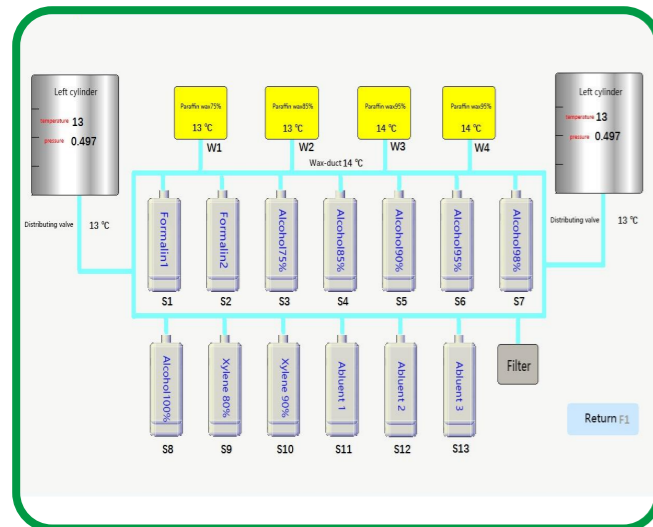
Fully Enclosed Tissue Processor with embedding function

- Dehydration + embedding can be done in one instrument, which can help to save space and cost.
- Rapid dehydration, transparency, wax dipping and embedding, the effect is the same as the conventional paraffin section.
- Large and uniform specimen processing capacity, flexible use and convenient control.

Technical data

Item NO.	XW-T/ST/AI/BM 900 / 660	XW-T/ST/AI/BM450/380/220/120/80
Cassette capacity	900PCS/600PCS	450PCS /380PCS /220PCS /120PCS/80PCS
Reagent Cabinet	Reagent bottles 13 PCS, clean bottles 3PCS, Wax bottles 4PCS	Reagent bottles 11PCS, clean bottles 3PCS, Wax bottles 3PCS
Retort capacity	6L*2	6L
Power	2kw	1.5kw
Reagent temperature range	30°C-70°C	
Voltage	220V, 50HZ	

SJ Series Reagent Test Fully Enclosed Tissue Processor



Feature



Dual Retort room :

Dehydration + embedding can be done in one instrument, which can help to save space and cost. Cassette capacity up to 900 PCS, rapid dual-retort, separate dehydration for large and small tissues.



Multi-protection system :

Patented anti-clogging pipeline system, double pump system, abnormal temperature protection system. Automatic switching system, double heating and double temperature measurement system, to protect the safety of tissue dehydration.



Reagent concentration measurement (optional):

The first technology to measure the concentration of formalin, alcohol and xylene. Data-based quality assurance of dehydration, scientific management and reagent saving.



Reagent external fume extraction system:

Three sets of optical sensors for the reasonable distribution of reagents, paraffin automatic replacement. Automatic reagent row position; provide a strong guarantee.

K Series Rapid Fully Enclosed Tissue Processor



Reduces time to **30 minutes** with rapid dewatering. Overall increased speed and significantly reduced waiting time.

Rapid dehydration test results



Technical data

Item NO.	XW-T/ST/AI/BM 900 / 660	XW-T/ST/AI/BM450/380/220/120/80
Cassette capacity	900PCS/600PCS	450PCS /380PCS /220PCS /120PCS/80PCS
Reagent Cabinet	Reagent bottles 13 PCS, clean bottles 3PCS, Wax bottles 4PCS	Reagent bottles 11PCS, clean bottles 3PCS, Wax bottles 3PCS
Retort capacity	6L*2	6L
Power	2kw	1.5kw
Reagent temperature range	30°C-70°C	
Voltage	220V, 50HZ	

Tissue Processor Baskets



XW-TSL-001

Thermo Excelsior ES/AS



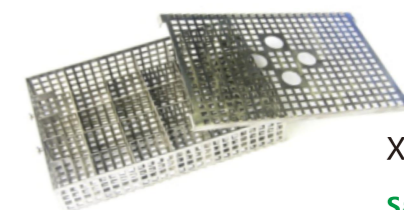
XW-TSL-002

Thermo Scientific Pathcentre



XW-TSL-003

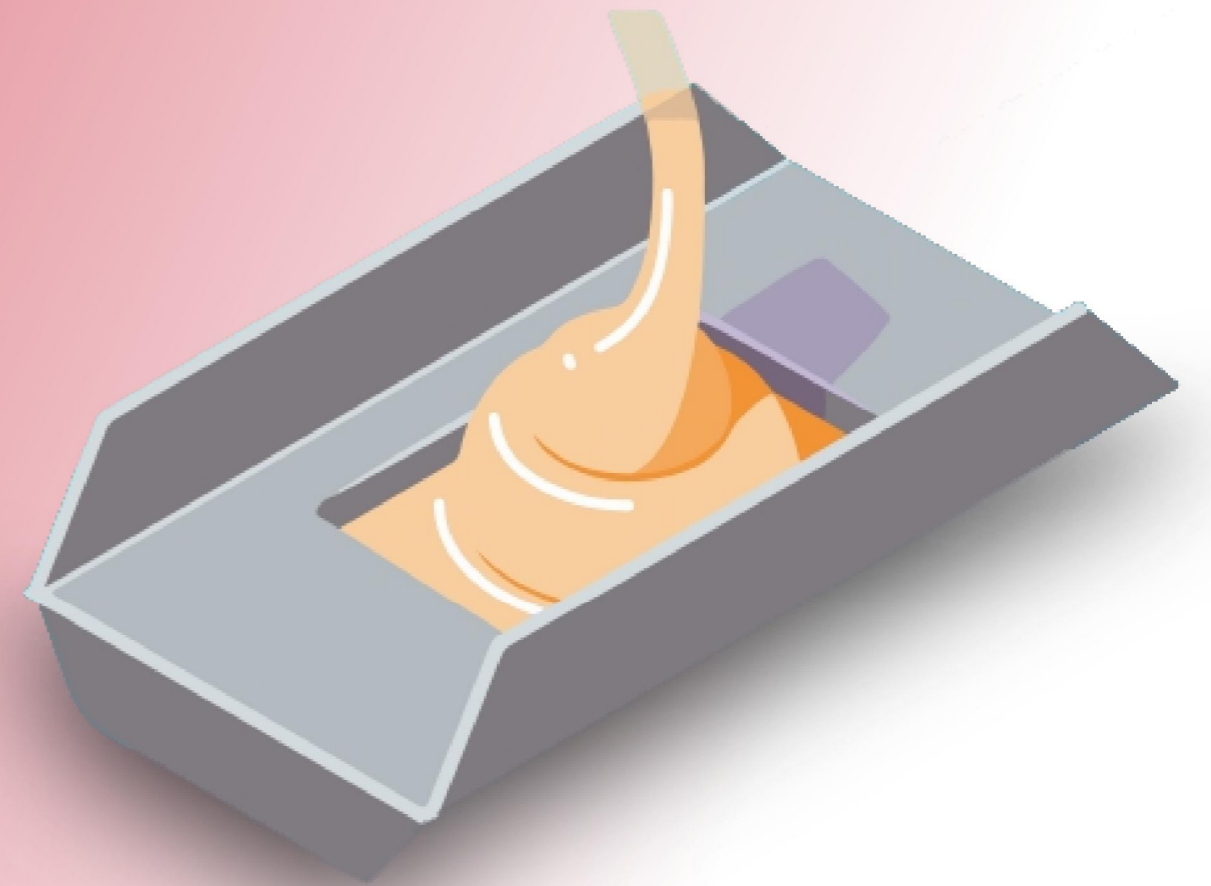
Leica ASP 200/300 S



XW-TSL-004

Sakura VIP-5/6

Embedding



Paraffin Dispenser

XW-4002



Feature

- Microprocessor controlled with heated, non-drip spigot
- A clear lid permits easy viewing of paraffin
- The durable stainless steel interior is easy to clean
- It features a built-in temperature controller that allows setting the temperature from room temperature to 72°C

Paramete

Capacity: 7.5 L
 Temperature control range: room temperature ~ 100 ° C
 Temperature control accuracy: ±1°C
 Heating power: 1000W
 Working environment: Ambient temperature: 5°C-40°C,
 relative temperature ≤80%
 Operating voltage: AC220V 50Hz

Electric Tweezers

Histo Clip

Equipped with double plug/three plug access holes, which can insert two/three electric tweezers at the same time



- Used to assist tissue sectioning in order to prevent paraffin from freezing and curing
- Keep their tips always at the optimal operating temperature and can be used continuously without adjustment, without affecting the temperature and organization of the operating medium



Embedding Center



XWM-A

Paramete

Dimensions: Heated tray: 620mm*560mm*410mm
 Cold plate: 620mm*380mm*410mm;
 Power: AC220V±10%, 50Hz±1Hz
 Heated tray Power: 1000VA
 Cold plate Power: 200VA
 Block max capacity: 270mm*150mm*150mm, volume 6L
 Cold plate dimensions: 345mm*330mm, can handle more tissue block at the same time
 Temperature range of each point
 * Praffin ataspnk,Dienser,Working surface,trimming tray: 0°C ~ 75°C
 *Temperature range: -30°C ~ room temperature

Feature

- Hd color touch screen is adopted for both hot and cold stations, with clearer display and more convenient operation
- The heated trays and cold plate have timing function, which can be set to start or stop at any time from Monday to Sunday
- Two preheating tanks which can be disassembled, temperature control
- Lighting: low-voltage LED lighting, bright, safe and energy saving
- New wax removal system (8 wax removal holes) to avoid paraffin accumulation on the work surface, easy to clean
- With tweezers heating function, easy to take out
- The heated trays and the cold plate can be exchanged at will to meet different customers' use habits

Embedding Center

Automatic program control, can be preset automatic start time, automatic shutdown time. Integrated worktable, paraffin gravity reflux design; The residual wax produced after embedding can automatically return to the storage tank to improve the recycling use of paraffin; To prevent the residual wax on the work surface, reduce the use of equipment failure. Color touch display screen, simple and convenient, at a glance



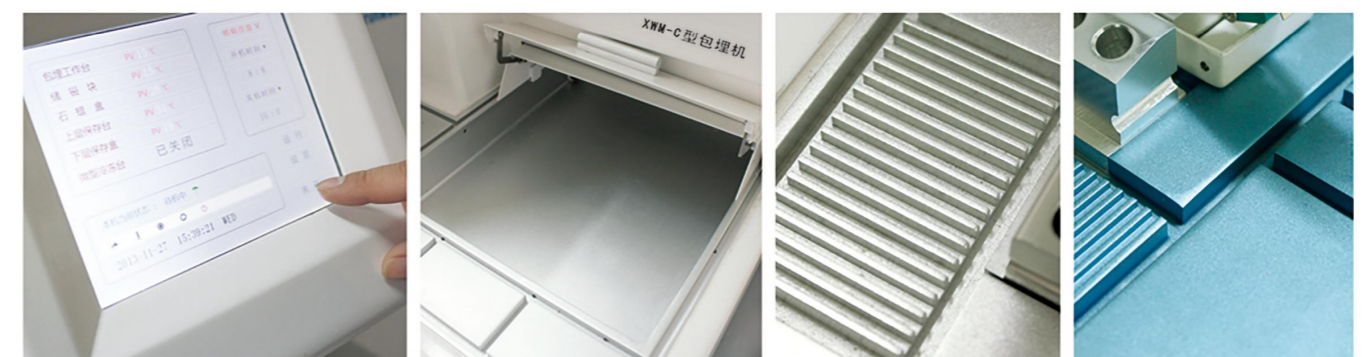
XWM-C

Feature

- Paraffin tank double overheating protection, Second-level filtering, avoid paraffin blocking
- Inside the insulation box is come with a tray rack, easy for take out the cassette film at one time
- 6.25L super capacity insulation box which can be store 222 embedding cassettes
- With 6 detachable holes for heating
- Independent small cooling plate, using semiconductor chilling plateto achieve refrigeration effect
- A wax remover is provided on the worktable to repair the embedded wax block
- Paraffin flow adjustment knob for fine tuning of embedding flow, can be equipped with a magnifying glass, more clear observation

Tissue embedding center	
Paraffin tank	Room temperature to 99°C
Specimen holder temperature	Room temperature to 85°C
Control center temperature	Room temperature to 85°C
Paraffin tank volume	8 L
Weight	40KG
Dimensions	670x680x540mm
Voltage	220V, 50HZ
Power	750W

Cold plate	
Working dimensions	365×330 mm
voltage	220V,50HZ
Power	100VA
Temperature	Room temperature ~ 20°C
Dimensions	380x680x450mm
Weight	25KG



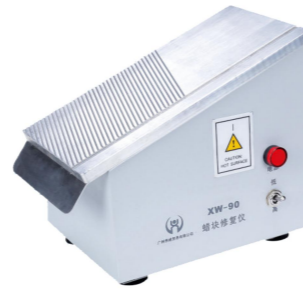
Wax Trimmer

XW-90

It is mainly used for wax block shape repair, can get rid of the wax block around the redundant part, trim the wax block to the required shape, easier to be clamped on the section, which is beneficial to improve the slicing quality.

- Internal temperature controller, more accurate
- Adopt special aluminum material
- Constant temperature controller

Temperature range: 90°C,100°C
 Heating power : 150W
 Working temperature : 5°C-40°C
 Relative humidity : ≤80%
 Voltage : AC220V 50Hz



XW-90

XW-230

- Large wax repair panel, can be trimmed at the same time 6 wax blocks, speed up work efficiency
- Adjustable temperature
- Digital temperature display, intuitive reading
- The slope groove design of the wax panel makes the friction surface of the wax block increase
- The recycling tank can be removed for easy cleaning

Temperature control range: RT-99°C
 Power supply voltage: 220V, 50HZ
 Dimensions: L230*W160*H175mm
 Power: 10 a



XW-230

XW-230A

One machine and two use, wax repair panel is used to repair the excess paraffin around the wax block, make the wax block more smooth, so as to cut out high quality film; The cut wax block can be sealed on the sealing wax panel, so as to isolate the direct erosion of the specimen by organisms.

- Adjustable temperature control
- Large trimming wax panel
- Digital temperature display, double temperature regulation, simple operation, intuitive reading

Temperature control range:
 Room temperature -99°C
Voltage: AC220V 50Hz
Dimensions: 260×180×175mm
Power: 200 w
Weight: 2.8 kg



XW-230A

Paraffin Wax

High quality paraffin, no odor, good toughness, complete slice, good continuity, save blade. 56-58°C, 58-60°C, 60-62°C a variety of melting point optional.



XIUWEI



XIUWEI



Histo-line



Leica

No.	Item No.	Brand	Packaging	Melting point	Remark
1	XW-QPL-001	McCormick	1kg/bag,8kg/ctn	56-58°C 58-60°C	Suitable for ordinary tissue and fragile and difficult to cut tissue
	XW-QPL-002	Leica	1kg/bag,8kg/ctn	56-58°C 58-60°C	Suitable for ordinary tissue and fragile and difficult to cut tissue
	XW-QPL-003	Histo-line	2kg/bag,12kg/ctn	56-58°C 58-60°C 60-62°C	Good toughness, good continuity
2	XW-QPL-004	Qisheng	1kg/bag,10kg/ctn	56-58°C 58-60°C 60-62°C	
	XW-QPL-005	Maoming	1kg/bag,15kg/ctn	56-58°C 58-60°C 60-62°C	
	XW-QPL-006	XIUWEI	1kg/bag10kg/ctn	56-58°C 58-60°C 60-62°C	Good toughness, high purity, no impurities and good viscosity

Base Molds for Embedding

XW-BM-001

Patent number: ZL2010 2 0151667.9



- Reusable. High quality stainless Steel.
- Embedding rings will fit all sizes.
- Highly polished surface
- The higher sides allow for more paraffin to be used during embedding assuring a stronger bond of the paraffin block to the cassette.

Specification:

37*25*6mm
30*25*6mm
25*25*6mm
15*15*6mm
7*7*6mm

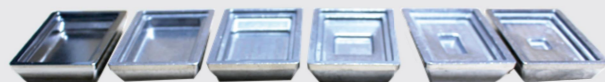
XW-BM-002

Used for embedding of tissue block
Material: stainless steel

Specification: 37*25*6mm
30*25*6mm
25*25*6mm
15*15*6mm
7*7*6mm



XW-BM-003



Used for embedding of tissue block

Material: Aluminium alloy

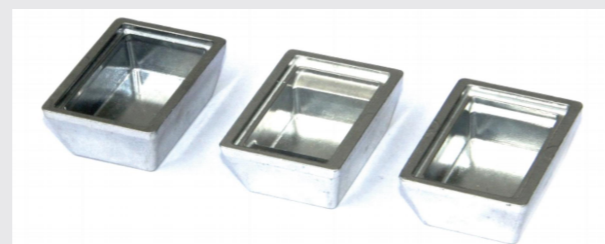
Specification: 37*25*5mm 30*25*5mm
25*25*5mm 15*15*5mm
6*6*5mm 8*15*7mm

XW-BM-004

Used for embedding large tissue and eyeball tissue block

Material: Aluminium alloy

Specification: 37*25*15mm
30*25*15mm
25*25*15mm



XW-BM-005



Disposable Base Molds

Used for embedding of tissue block

Material: Aluminium alloy

Specification: 37*25*3, 5, 10, 15mm
30*25*3, 5, 10, 15mm
25*25*3, 5, 10, 15mm
15*15*3, 5, 10, 15mm
7*7*3, 5, 10, 15mm

XW-BM-006



Stainless steel cover

Used with the cassette without lid

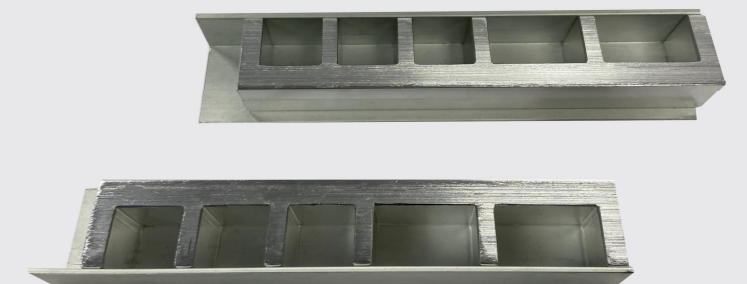
Material: stainless steel

Specifications: Bar hole, round hole optional

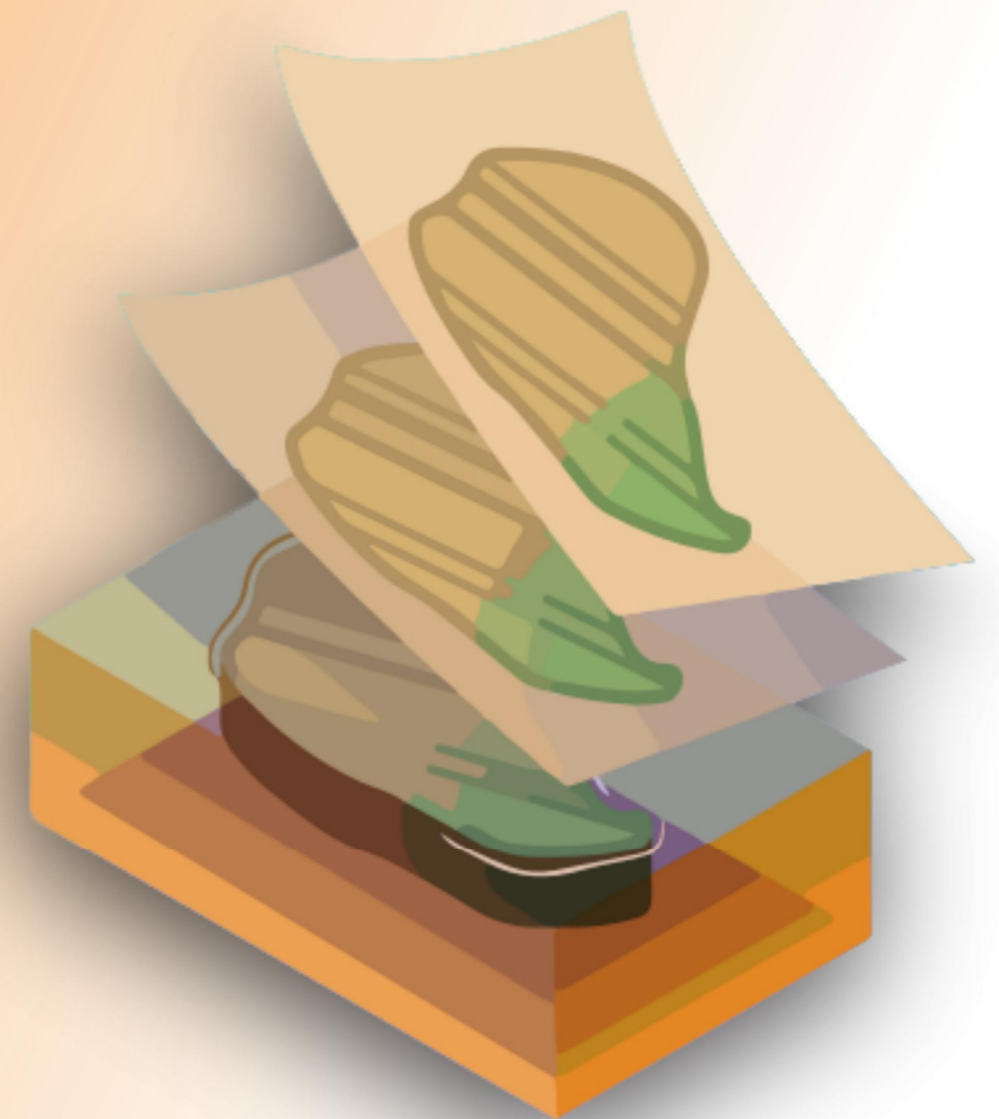
XW-BM-007

Aluminum alloy embedding set

Aluminum alloy material, used for tissue embedding



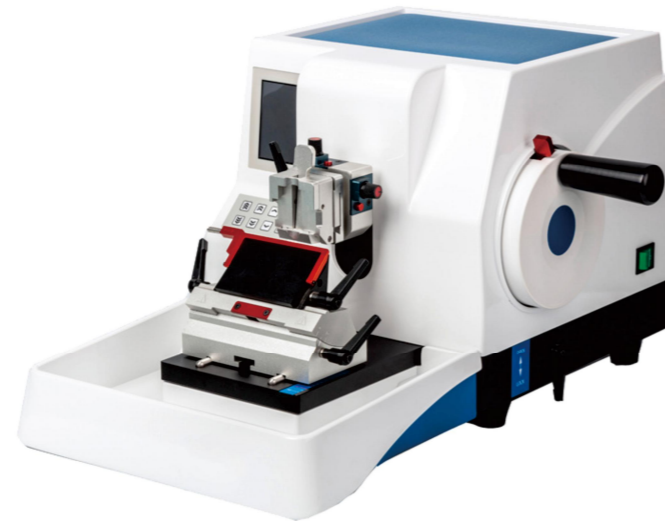
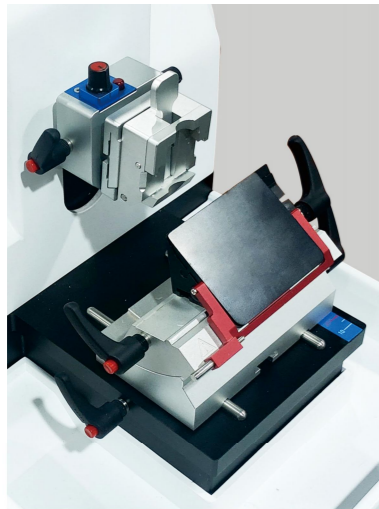
Paraffin block section



Simi Paraffin Microtome

Feature

- Hd color touch screen, more simple operation
- High precision feeding system :25600 fine fraction high precision controller with high precision
- photoelectric sensor system to ensure 0.1um slice accuracy
- Quick conversion of slicing and trimming modes on the LCD screen or control panel
- Slice counting function
- In order to give users a better operating experience, we have made optimization for the forward and backward feed of the sample, including continuous movement of 0.1mm/s~3.5mm/s and single movement of 1-100 μm
- 2 independent handwheel lock: 1, handwheel 360° arbitrary position lock;



XW-CU1200B



XW-CU1200C

Technical Data

Dimensions: XW-CU1200B580X430X315mm
 XW-CU1200C580X490X315mm
 Section thickness setting:0~99.9μm in 1μm±
 Trimming section Thickness range:0~999μm in 1μm±
 Specimen retraction:0~100μm adjustable ,can be turned off
 Fixed length:1~100μm,adjustable
 Maximum sample size: 50*60*40mm
 Up-down move length:60mm
 Blade holder:Left and right movement
 Front back move length:28±1mm
 Section Angle: From 0° to 10°,Vertical 0° ~ 10°adjustable
 Coarse feed: 1mm/s~3.5mm/s adjustable
 High precision feed: 1mm/s~3.5mm/s adjustable

Manual Microtome

Feature

- Reasonable structure, beautiful appearance, easy to operation, ergonomic design
- High precision and stable movement design, ensure the quality of slicing while mechanical parts lasting lubrication, maintenance free
- Hand wheel 360° arbitrary position locking, simple and convenient operation
- The sample Angle can be adjusted to make the slicing effect more ideal
- The slicing knife holder can be moved horizontally, the angle can be adjusted within the range of 0°~10°, which is convenient to achieve better slicing effect
- Advanced and precise crankshaft and counterweight design ensure that the operation of the hand wheel is lighter and more comfortable

Technical Data

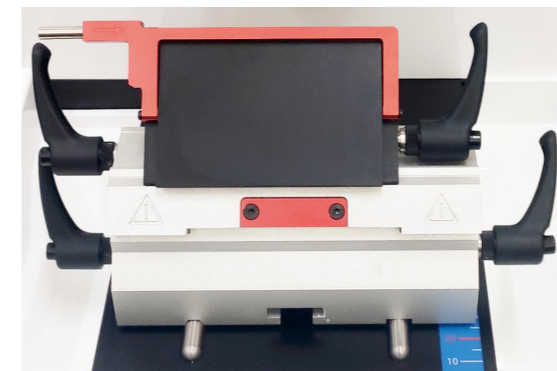
Dimensions: 555mm*430mm*300mm
 Section thickness setting: 0~60μm
 Blade holder: Left and right movement, adjustable from 0° to 10°
 Maximum sample size:Standard specimen clamp, 50*60*40mm
 Section Angle: From 0° to 8°,Vertical 0° ~ 8°adjustable, 360 rotation
 Up-down move length:60mm
 Front Back move length:28±1mm

Trimming section Thickness range:

0~10μm, 1μm increments;
 10~20μm, 2μm increments;
 20~60μm, 5μm increments;



XW-S7120-A



Manual Microtome

Feature

- Precise positioning system with 0 digit indication
- Compact structure and ergonomic design
- The whole machine embodies the concept of user safety
- The position of the coarse feeding wheel is ergonomically designed, with no operating fatigue
- High precision tool rest lateral movement function ensures that the whole blade can be used



Technical data

Sectioning Thickness Range: 1 - 60 μ m
 Section thickness increments: 1 - 10 μ m in 1 μ m \pm
 10 - 20 μ m in 2 μ m \pm
 20 - 60 μ m in 5 μ m \pm
 Section thickness indicator: View window
 Coarse feed : by the coarse feed hand wheel
 Trimming thickness setting:10 - 30 μ m
 Horizontal feed range: 30mm
 Vertical stroke length: 70mm
 Specimen retraction: 60mm
 Maximum specimen block size: 55 x 66 x 30 mm
 Specimen orientation: Horizontal rotation: $\pm 8^\circ$,
 Vertical rotation: $\pm 8^\circ$



XW-3655

Specifications

Width(include the had weel):413mm
 Depth(include the waste tank):618mm
 Height(include the tray):305mm
 Weight:about 34kg

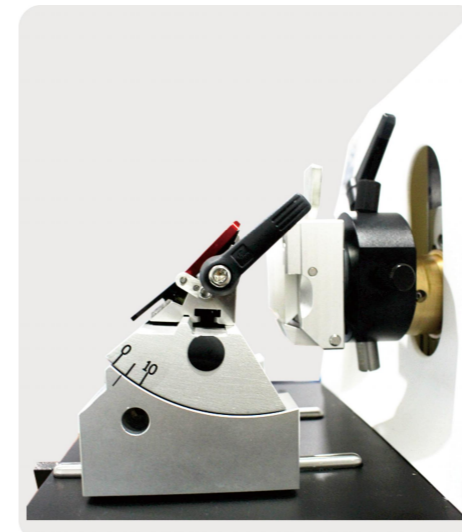
Manual Microtome

Feature

- Cover top can be placed blade, paraffin block, slide and tools, convenient access at any time
- New cross roller guide rail and micron feeding system, durable lubrication, no oiling and frequent maintenance
- Hand wheel can be locked at any position to ensure safety
- New ultra-high performance disposable blade holder, so that each slice can obtain the ideal slice effect.
 The lateral movement function of the tool rest facilitates the use of the full length of the blade
- Excellent cost performance, meet the needs of conventional paraffin sectioning

Technical data

Section thickness indicator :View window
 Section thickness setting:
 • 0-2 μ m in 0.5 μ m \pm
 • 2-20 μ m in 1 μ m \pm
 • 10 - 20 μ m in 2 μ m \pm
 • 20 - 60 μ m in 5 μ m \pm
 Horizontal feed range: 25mm
 Section thickness range :0.5-60 μ m
 Vertical stroke length:59mm
 Maximum specimen block size: 20x55mm



Specifications

Width: 400mm Height: 270mm
 Depth: 470mm Weight: about 29kg

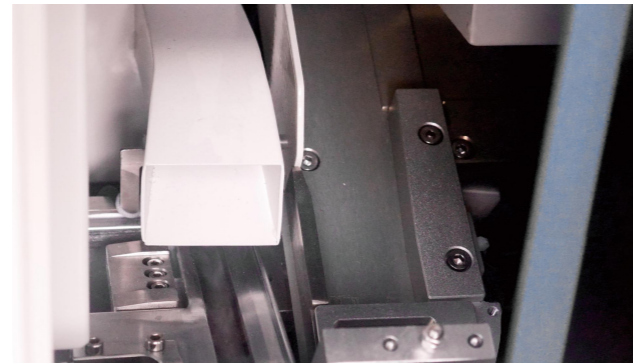


XW-3325

2 in 1 Slide & Cassette Printer



UNIQUEPATENT



Slide & Cassette Printer 2 In 1

Meet the requirements of large printing volume, but also solve the problem of insufficient department space.

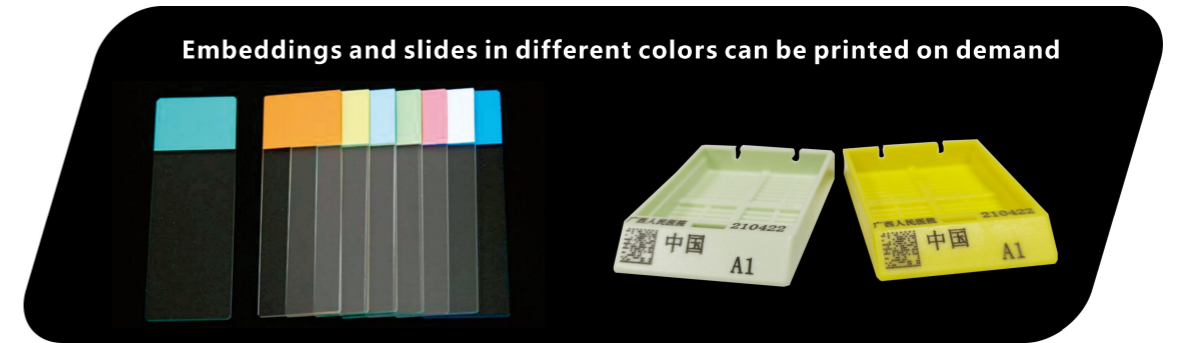
One machine can print cassette and slide, pathological information one corresponding, reduce your operation steps, improve the efficiency of the department.



Mini Slide & Cassette Printer 2 In 1

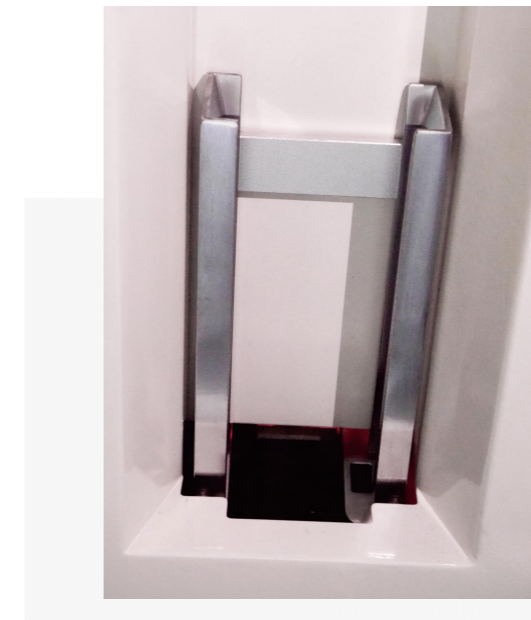
Customized solution

- Cassette input hopper:1-12hopper (80 cassettes per hopper)
- Slide input hopper:1- 6hopper (100 slide per hopper)
- Printing principle: infrared/ultraviolet
- Built-in display screen (system)/ external computer
- Optional: Scanning gun

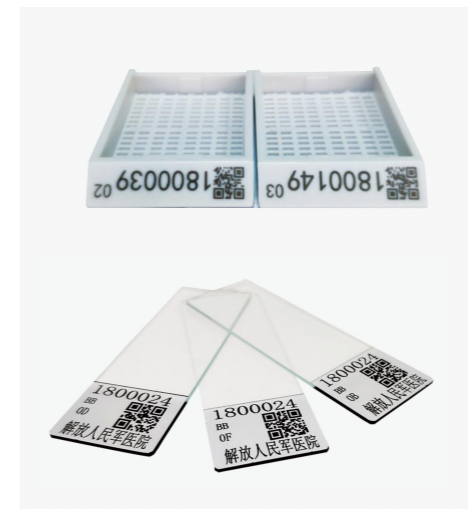


Embeddings and slides in different colors can be printed on demand

Feature



Cassette input hopper:1-6hopper (80 cassettes per hopper)
Slide input hopper:1-2hopper (150 slide per hopper)
Cassette output Capacity:≥15pcs
Slide output Capacity:≥150pcs



It's able to print the slide and embedding cassette at the same time



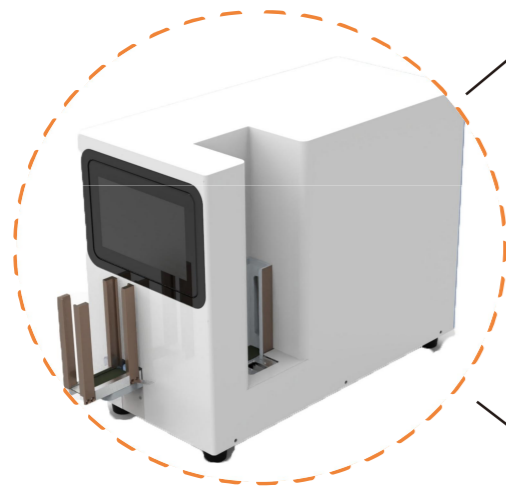
Patented technology- Able to print both embedded cassette and slides,save the space.

Slide Printer

Customized solution

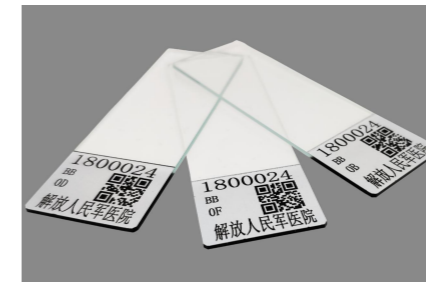
- Input hopper: 1-6 hopper (100 slides ≥ per hopper)
- Printing principle: infrared/ultraviolet
- Built-in display screen (system)/ external computer
- Dual channel which allow printed alternately/single channel printed individually
- Optional: large-capacity collecting tray scanning gun

(Double channel)
Built-in



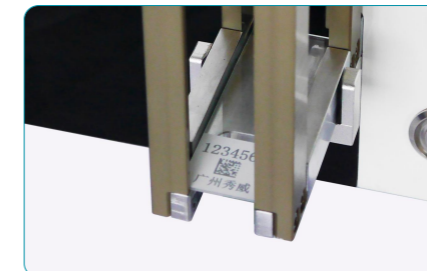
(Single channel)

(Double channel)
External

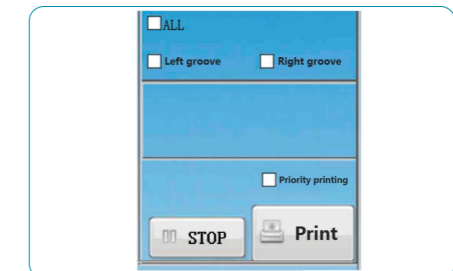


Xiwei laser slide printer is a good solution to the problem of the operator on duty, choose centralized/separate printing, large capacity input hopper, can be placed 150 slides per time, one-time collection 300 slides, different color glass slides printing arbitrary switch.

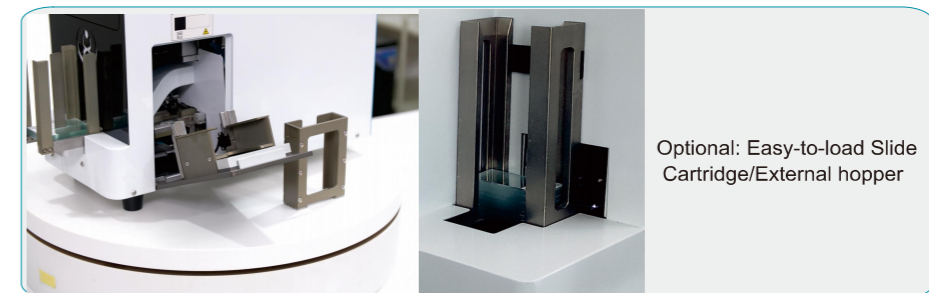
Feature



The first slide is always placed on the top



Priority printing, when there is a frozen specimen



Optional: Easy-to-load Slide Cartridge/External hopper



Clear printing, resistant to alcohol, xylene and other reagents, do not fade, two-dimensional code recognition rate of 100%

Water Bath-Slide Drier Workstation

XW-TK7211

Parameter

Dimensions: 510mm*335mm*225mm
 Voltage: AC220V±10%, 50Hz±1Hz
 Power: 800 va

Temperature range of:
 floating bath: 0°C ~99°C
 slide dryer: 0°C ~99°C
 oven: 0°C ~99°C

Dimension:
 floating bath: 180*135*75mm
 slide dryer: 180*135*75mm
 oven: 220*100*95mm

Feature

- Digital display control screen, allow independent temperature control
- Computer temperature control, rapid and stable temperature rise
- Timing switch setting, can be arbitrarily set 0-99 minutes
- Computer and physical dual temperature control avoid excessive temperature,damage to tissue section



XW-2016

Parameter

For floating bath part

- Independent power control, temperature, with periodic reminder function
- With LED light for better observe
- Temperature range: RT+5~85°C
- Temperature accuracy: ±1°C
- Heating power: 450 W
- Pyrex bowl size: 230*230*50mm
- Voltage: AC220V 50Hz
- With alarm lamp

For slide drier part

- Independent power control
- Can set the timed shutdown
- Constant temperature range: RT+5~85°C
- Temperature control accuracy: ±1°C
- Heating power: 400 W
- Panel size: 250*230mm
- Capacity: 45 slides
- Voltage: AC220V 50Hz



XW-TK7218



Feature

- Hd color touch screen
- Computer precision temperature control, fast and stable heating
- Timing switch setting
- Tissue bath, slide dryer can be heated separately switch
- Regular reminder function
- Computer and physical dual temperature control and protection system, to avoid excessive temperature, damage tissue section

Parameter

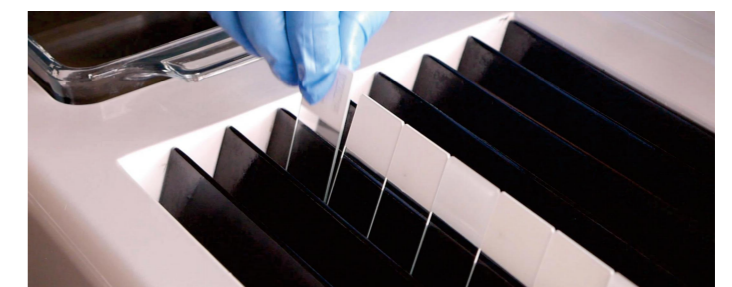
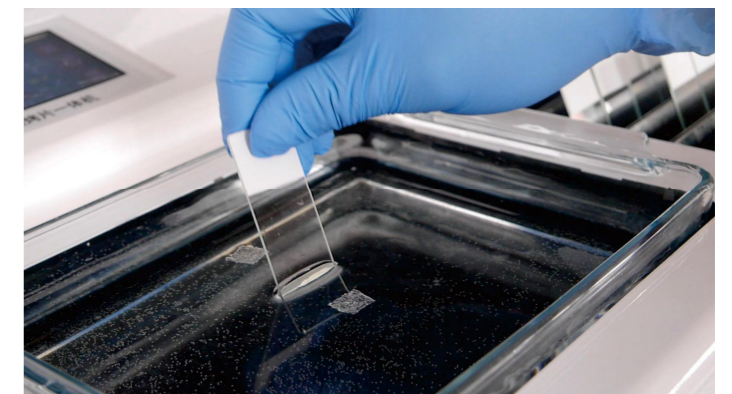
Dimensions: 550*375*180mm
 Votage: AC220V±10%, 50Hz±1Hz
 Power: 700 va

Temperature setting range of:

Water bath: room temperature -99°C
 Slide dryer: room temperature -99°C
 Oven: room temperature -99°C

Dimension:

Water bath: 210*168*55mm
 Slide dryer: 206*170*55mm
 Oven: 230*95*105mm



Tissue Flotation Water Bath

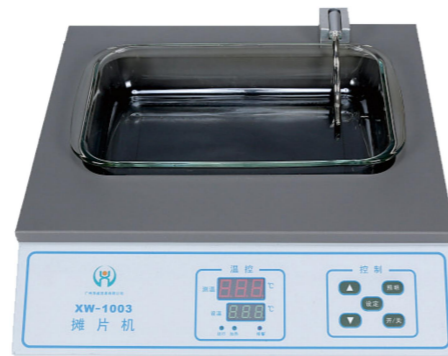
Used in histology and pathology laboratory to prepare the tissue sections.

XW-1003

- Removable Pyrex bowl is used as the water container to facilitate water exchange
- High efficiency aluminum heating plate
- Underwater LED lighting system
- High-precision microcomputer control composition

Parameter

Temperature control range: room temperature ~ 100 °C
 Temperature control accuracy: ±1°C
 Heating power: 480W
 Working environment: Ambient temperature: 5°C-40°C
 Relative humidity ≤80%
 Operating voltage: AC220V 50Hz



XW-1003

XW-1001

- Made of specially treated aluminum pot, high efficiency cast aluminum heating plate
- Rotation temperature control
- High efficiency aluminum heating plate
- Round shape design, with a glass transparent cover to prevent dust pollution

Parameter

Temperature control range: room temperature ~ 100 °C
 Heating power: 450W
 Working environment: Ambient temperature: 5°C-40°C
 Relative humidity ≤80%
 Operating voltage: AC220V 50Hz



XW-1001

XWP-A

- Special backsole coating, easy to observe and pick up
- Film heating principle, fast heating speed, 10 minutes to quickly reach the set temperature
- High precision microcomputer control composition
- Digital display control screen

Parameter

Temperature control range: room temperature ~ 99°C
 Temperature control accuracy: ±1°C
 Heating power: 300W
 Dimensions: 310x380x105mm (length * width * height)
 Working environment: Ambient temperature: 5°C-40°C
 Relative humidity ≤80%
 Weight: 3.5 kg



XWP-A

XW-TP01

Parameter

Dimensions: 327mm*340mm*166mm
 Power supply: AC220V±10%, 50Hz±1Hz
 Temperature range: room temperature -99 °C,
 indexing value 1 °C

Feature

- Hd color touch screen, easy to operate
- Computer precision temperature control, small error
- Timing switch function
- The set temperature is automatically retained after running
- Regular reminder function
- High temperature resistant large capacity glass basin, with LED lighting at the bottom
- Dual temperature control and protection system to avoid excessive temperature and damage to tissue sections



XW-TP01

Slide Drying Hotplate

It is suitable for the laboratory of histopathology, biology, morphology, chemistry, clinical and bacteriology to bake the tissue sections of animals and plants and the human body.

Feature

Microcomputer control, high precision constant temperature; The surface is made of special material, no discoloration, no deformation, corrosion resistance and wear resistance after long working time.

XW-2001

Without cover lid

Power: 200W

Working area: 100*640mm

Temperature range: RT+5°C ~ 75°C

Temperature Accuracy: ±2°C

Capacity: 75 slides

Voltage: AC220V/50Hz



XW-2001

XW-2002

Without cover lid

Power: 100W

Working area: 85*260mm

Temperature range: RT+5°C ~ 75°C

Temperature Accuracy: ±2°C

Capacity: 30 slides

Voltage: AC220V/50Hz



XW-2002

XW-2004

With lid

Power: 200W

Working area: 100*640mm

Temperature range: RT+5°C ~ 75°C

Temperature Accuracy: ±2°C

Capacity: 75 slides

Voltage: AC220V/50Hz

Can use as a oven



XW-2004

XW-2005

With lid

Power: 100W

Working area: 85*260mm

Temperature range: RT+5°C ~ 75°C

Temperature Accuracy: ±2°C

Capacity: 30 slides

Voltage: AC220V/50Hz

Can use as a oven



XW-2005

Slide Drying Hotplate

XW-KP02

Feature

- Hd color touch screen, easy to operate
- Computer precision temperature control, fast and stable heating
- Timing switch function
- Computer and physical dual temperature control and protection system, to avoid excessive temperature, damage tissue section

Parameter

Dimensions: 327mm*340mm*166mm
 Power supply: AC220V±10%, 50Hz±1Hz
 Power: 200 va plus or minus 10%
 Temperature setting range: room temperature -99 °C
 Number of baking sheets:56 slides



XW-KP02

XWT-A

Feature

- High efficiency cast aluminum heating plate, high precision microcomputer control composition
- Film heating principle, energy saving loss, short heating time
- The special black back and bottom coating is anti-corrosion and anti-scratch.
- The aluminum surface conducts heat quickly

Parameter

Temperature control range: room temperature ~ 99°C
 Temperature accuracy: 1°C
 Heating power: 300W
 Working environment: Ambient temperature: 5°C-40°C;
 Relative humidity ≤80%
 Voltage: AC220V/50Hz
 Dimensions: 310x320x115mm



XWT-A

Slide Drying Hotplate

XW-2003

Feature

- Stable TEFLON coating
- Digital display with LCD
- Double temperature protection
- High thermal conductivity

Parameter

Temperature range: room temperature -99°C adjustable
 Rated power: 230W
 Rated voltage: 220±10V 50Hz
 Capacity: 40 standard slides
 Temperature control accuracy: ±1°C



XW-2003

TK-2111

Feature

- Digital display temperature.
- Clear display with high resolution
- It has good anti-interference and can control the temperature accurately
- With dual temperature protection, monitoring heating temperature makes it safer and more reliable
- Transparent Plexiglass cover for dustproof (optional)

Parameter

Temperature range: room temperature -99°C adjustable
 Rated power: 230W
 Rated voltage: 220±10V 50Hz
 Capacity: 65 standard slides
 Temperature control accuracy: ±1°C



TK-2111

Microtome Blades

China General Agent

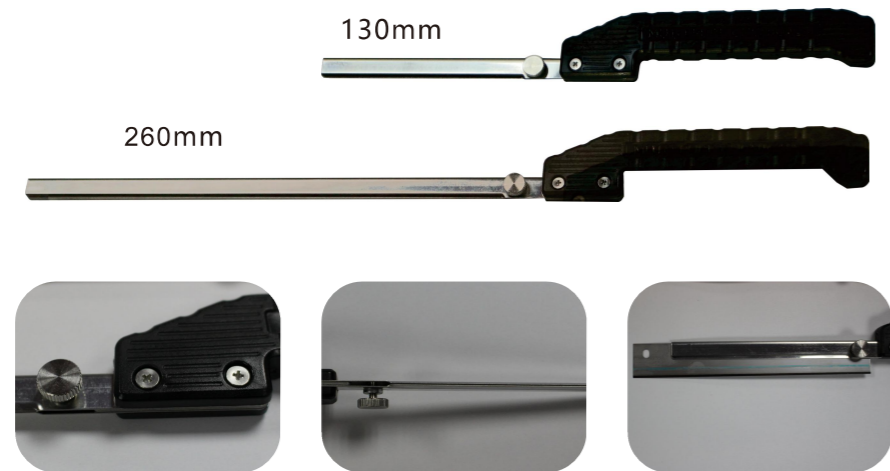


Suitable for all kinds of tissue sections and hard tissue sections.
Extremely long service life (even for hard tissue sections).
Length 80mm, blade angle 35°, thickness 0.25-0.32mm

Item No.	Detail	Packaging	Remark
XW-DP-018	LH35	50pcs/box	Low-Profile,for hard tissue
XW-DP-019	LS35		Low-Profile,for soft tissue
XW-DP-020	HS35		High-Profile,for frozen section
XW-DP-023	NO.42		Low-Profile,for hard tissue
XW-DP-024	NO.52		Low-Profile,for hard tissue
XW-DP-025	NO.70		High-Profile,for regular tissue

MUTO Trimming Blade Handle

Knob - type material handle, knife clip gap adjustable, easy to install the blade



Screw knob to adjust

Adjustable according to blade thickness

Suitable for low/high profile

McCormick

Item No.	Detail	SPEC	Remark
XW-DP-001	Paract42	50pcs/box	Low profile
XW-DP-002	Paract52		Low profile
XW-DP-003	Cryo Edge		High profile,for frozen section



FEATHER

Item No.	Detail	SPEC	Remark
XW-DP-004	R35	50pcs/box	Low profile
XW-DP-005	A35		Low profile
XW-DP-006	H35		High profile
XW-DP-007	N35		Low profile
XW-DP-008	S35		Low profile
XW-DP-009	C35	20pcs/box	Low profile,for frozen section



LEICA

Item No.	Detail	SPEC	Remark
XW-DP-010	819	50pcs/box	Low profile
XW-DP-011	818		High profile
XW-DP-012	DB80LX		Low profile
XW-DP-013	DB80LS		Low profile
XW-DP-014	DB80HS		High profile



Thermo, McCormick

Item No.	Detail	SPEC	Remark
XW-DP-014	Mx35	50pcs/box	Low profile
XW-DP-015	SEC-Blue		Low profile
XW-DP-016	SEC-Red		Low profile



XIUWEI

Item No.	Detail	SPEC	Remark
XW-DP-017	VIP L35	50pcs/box	Low profile

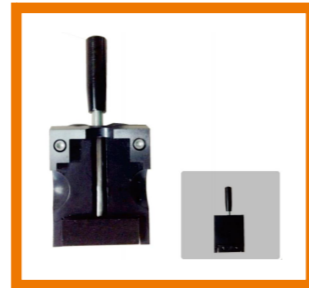


Embedding Cassette Clamp

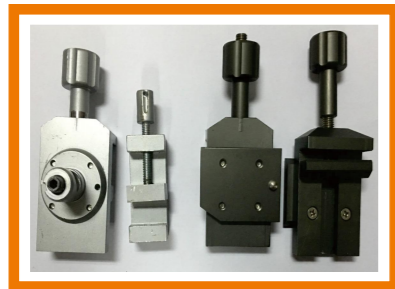
For microtome fixed paraffin block



XW-JT-001
Leica



XW-JT-002
ThermoFisher



XW-JT-003
Universal



XW-JT-004
Microm

Marking Pen



XW-B-001



XW-B-006

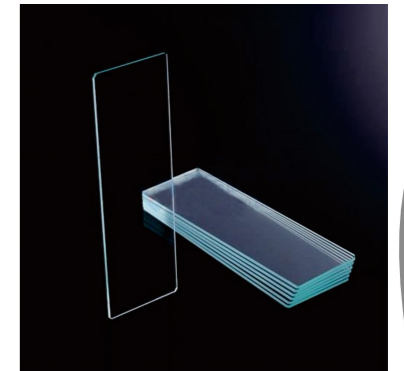
XW-B-007

Item NO.	Detail	Packaging	Remark
XW-B-001	Marking pen for cassette	12/box	Made in Kroean,black
XW-B-002	Diamond marking pen	1	For glass marking, slide marking
XW-B-003	Brush Pen	1	For tissue bath
XW-B-004	Brush Pen	1	For frozen section
XW-B-005	Brush Pen for clean	1	For clean microtome/cryostat microtome
XW-B-006	IHC Pen	1	Made in Japan, S
XW-B-007	IHC Pen	1	Made in Japan, L

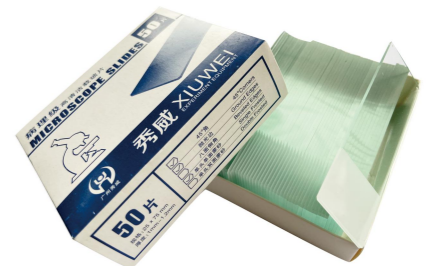
Slide

- Made from the highest quality glass sheets
- 75*25mm, thickness 1-1.2mm
- They are packed with care to assure cleanliness
- The glass is fully annealed to minimize chipping
- Clean- free

Detail	Item No.	Specification	Packaging
Slide	XW-ZBP-001	7101P, Plain	50pcs/box, 50box/ctn
Slide	XW-ZBP-002	7105P, Frosted	50pcs/box, 50box/ctn
Slide	XW-ZBP-003	7107P, Two end, Frosted	50pcs/box, 50box/ctn
Slide	XW-ZBP-004	7108P, Painted	50pcs/box, 50box/ctn
Slide	XW-ZBP-005	7108, for laser printer	50pcs/box, 50box/ctn
PCB Slides	XW-ZBP-006	8105W	72pcs/box, 50box/ctn
PCB Slides	XW-ZBP-007	8105W, Painted	72pcs/box, 50box/ctn
PCI Slides	XW-ZBP-008	9308W (Premiere)	72pcs/box, 20box/ctn
Slide	XW-ZBP-009	75*45mm (for large tissue)	50pcs/box, 50box/ctn



XW-ZBP-001



XW-ZBP-002



XW-ZBP-004、005

Suitable for laser, inkjet, thermal slide printers



XW-ZBP-004



XW-ZBP-006/007



XW-ZBP-008

Staining



Full-Automated Slide Stainer



XWS-A

Feature

- Large capacity, can run 5 staining rack at the same time, each one can be preloaded with 30 slides,
- Different staining racks can run the same or different programs
- No manual operation, the mechanical arm will automatically transfer the staining rack to the reagent tank water bath and staining furnace
- It can store 16 sets of staining procedures, and each procedure can set up a maximum of 30 steps
- Automatic continuous upload and download staining rack, no need to open the machine cover when using, can be transmitted through the operation of extraction crown, avoid gas overflow in the instrument
- Slide drying furnace can be opened and closed according to the need
- Voltage: 220V; 50 HZ; 300W
- Control panel: color touch display screen, automatic alarm beeping system
- Dimension: 1500×600×650mm
- Weight: 80kg

Cover Glass

- Made of the super white glass
- Clean- free

Item No.	Specification	Packaging
XW-GBP-001	18*18mm	200pcs/box
XW-GBP-002	20*20mm	200pcs/box
XW-GBP-003	22*22mm	200pcs/box
XW-GBP-004	24*24mm	200pcs/box
XW-GBP-005	24*32mm	100pcs/box
XW-GBP-006	24*40mm	100pcs/box
XW-GBP-007	24*50mm	100pcs/box
XW-GBP-008	24*60mm	100pcs/box
XW-GBP-009	For large tissue	50pcs/box



XW-GBP-005



XW-GBP-007



Slide Storage Box



Item No.	Capacity	Remark
XW-CP-001	5PCS	Plastic, index paper, 50 / pack Color: White, blue, green, red, yellow
XW-CP-002	12PCS	Plastic, index paper, 10 / pack Color: White, blue, green, red, yellow
XW-CP-003	25PCS	Plastic, index paper, 10 / pack Color: White, blue, green, red, yellow
XW-CP-004	50PCS	Plastic, index paper, 10 / pack Color: White, blue, green, red, yellow
XW-CP-005	100PCS	Plastic, index paper, 10 / pack Color: White, blue, green, red, yellow
XW-CP-006	100PCS	Wooden, index paper, 10 / bag



XW-CP-003



XW-CP-005



XW-CP-004

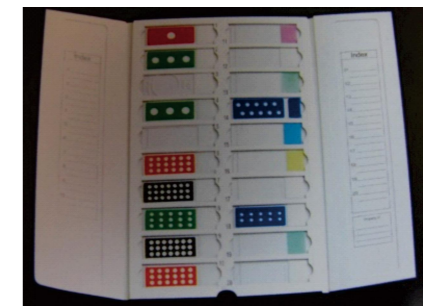


Slide Mailers

Item No.	Capacity	Remark
XW-YJ-001	5PCS	Plastic, 50/bag
XW-YJ-002	20PCS	With cover, 40 / bag



XW-YJ-001



XW-YJ-002

Cardboard Slide Trays

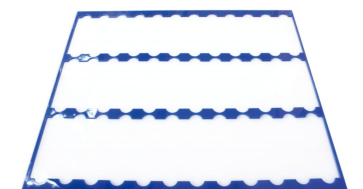
Item No.	Capacity	Remark
XW-LP-001	20PCS	Plastic, with divider. 100 / box
XW-LP-002	20PCS	Plastic with cover 100 / box
XW-LP-003	36PCS	Plastic, with divider. 50 / box



XW-LP-001



XW-LP-002



XW-LP-003

Staining Rack

Material	Item No.	Capacity	Remark
Plastic	XW-RJ-001	24PCS	Verticle Type
	XW-RJ-010	30PCS	LEICA
	XW-RJ-011	20PCS	Sakura
	XW-RJ-012	20PCS	Thermo
Stainless Steel	XW-RJ-002	26PCS	Verticle Type
	XW-RJ-003	30PCS	Verticle Type
	XW-RJ-004	40PCS	Verticle Type
	XW-RJ-005	20PCS	Verticle Type
	XW-RJ-006	60PCS	Verticle Type
	XW-RJ-013	30PCS	Verticle Type
Copper	XW-RJ-007	20PCS	Staining rack
	XW-RJ-014	30PCS	Verticle Type



XW-RJ-001



XW-RJ-002



XW-RJ-003



XW-RJ-012



XW-RJ-005



XW-RJ-007



XW-RJ-010



XW-RJ-011

Staining Jar

Material	Item No.	Capacity	Remark	
Glass	XW-RG-001	5PCS	Verticle Type,20PCS/box	
	XW-RG-002	10PCS	Verticle Type,20PCS/box	
	XW-RG-003	30PCS	20PCS/box	
	XW-RG-004	60PCS	10PCS/box	
	XW-RG-005	24PCS	12PCS/box	
	XW-RG-008	30/40PCS	10.5×9.5×9.5cm, 20PSC/set	
	XW-RG-009	60PCS	16.5×9.5×10.50cm, 20PSC/set	
	XW-RG-010	26-30PCS	Round, 10×12CM, 12PSC/set	
	XW-RG-011	30-40PCS	Round, 12×15CM, 12PSC/set	
	XW-RG-012	20-60PCS	Round, 12×15CM, 12PSC/set	
	XW-RG-013	30-40PCS	12PSC/set	
	XW-RG-014	50-60PCS	12PSC/set	
	XW-RG-015	15PCS	12PSC/set	
	Plastic	XW-RG-006	24PCS	12PSC/set,with 2 staining rack
		XW-RG-007	24PCS	12PSC/set,with 12 staining rack



XW-RG-001



XW-RG-002



XW-RG-007



Cryosectioning



Cryoembedding Freezer

- Rapid freezing at -60°C which can reduce the production of ice crystals and provide excellent frozen sections to diagnose.
- Stirling Refrigeration technology, no dry ice need, liquid nitrogen, cryogen



XW-BDY-01

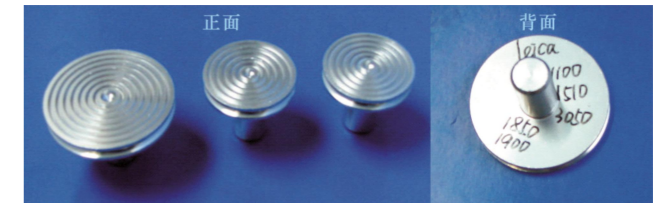
Technical data

- Freeze shelf: 6 positions, each one can be set the different time
- Compatible with all OCT reagent and Cryostat Specimen disc in the market
- The Cryostat Specimen disc is compatible with all cryostat in the market
- Timing switch function, can be set in advance within a week of the switch time and temperature
- With automatic defrosting function, defrosting time can be set
- Built-in storage space and magnet adsorption door opening mode, which can place consumables such as frozen embedding agent required by the machine
- Dimensions: 422.5*245*384.3mm

Cryostat Specimen disc

For cryostat tissue fixation use

Model NO.: XW-LDT-001
 Brand: LEICA
 Compatibility: CM1100, 1510, 1850, 1900, 3050
 Specifications: 20mm, 30mm, 35mm



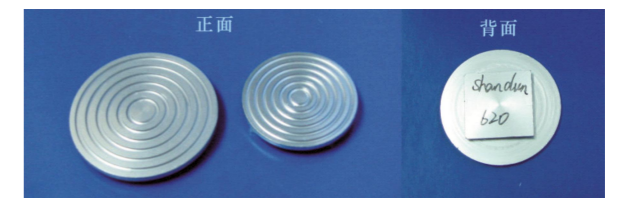
Model NO.: XW-LDT-002
 Brand: LEICA
 Compatibility: CM1950
 Specifications: 20mm, 30mm, 35mm

Model NO.: XW-LDT-003
 Brand: Thermo
 Compatibility: HM520, 525
 Specifications: 20mm, 25mm, 30mm, 35mm



Model NO.: XW-LDT-004
 Brand: Thermo
 Compatibility: HM500, 550, 560
 Specifications: 25mm, 30mm, 35mm

Model NO.: XW-LDT-005
 Brand: Thermo
 Compatibility: 620E, 620ME, 620SME
 Specifications: 33mm, 45mm

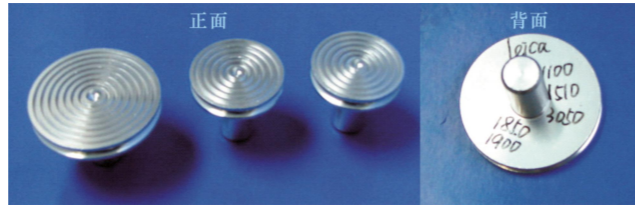


Model NO.: XW-LDT-006
 Model NO.: Thermo
 Compatibility: FSE, FE
 Specifications: 30mm, 40mm, 50mm

Cryostat Specimen Disc

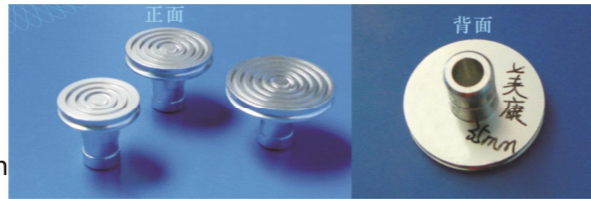
For cryostat tissue fixation use

Model NO.: XW-LDT-001
 Brand: LEICA
 Compatibility: CM1100、1510、1850、1900、3050
 Specifications: 20mm、30mm、35mm



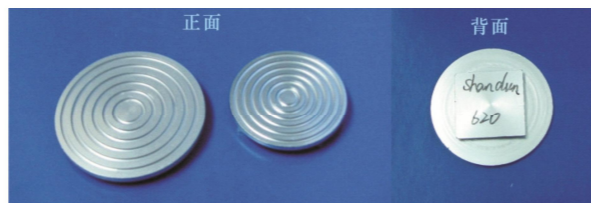
Model NO.: XW-LDT-002
 Brand: LEICA
 Compatibility: CM1950
 Specifications: 20mm、30mm、35mm

Model NO.: XW-LDT-003
 Brand: Thermo
 Compatibility: HM520、525
 Specifications: 20mm、25mm、30mm、35mm



Model NO.: XW-LDT-004
 Brand: Thermo
 Compatibility: HM500、550、560
 Specifications: 25mm、30mm、35mm

Model NO.: XW-LDT-005
 Brand: Thermo
 Compatibility: 620E、620ME、620SME
 Specifications: 33mm、45mm



Model NO.: XW-LDT-006
 Model NO.: Thermo
 Compatibility: FSE、FE
 Specifications: 30mm、40mm、50mm

Model NO.: XW-LDT-007
 Brand: SAKURA
 Compatibility: cryo3
 Specifications: 25mm、30mm、35mm



Model NO.: XW-LDT-008
 Brand: Thermo
 Compatibility: Nx50
 Specifications: 30mm、40mm、50mm

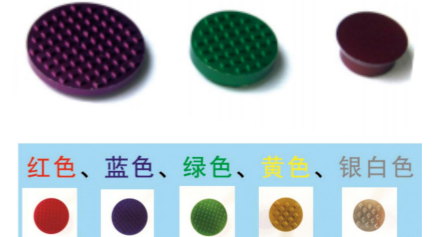


Color series

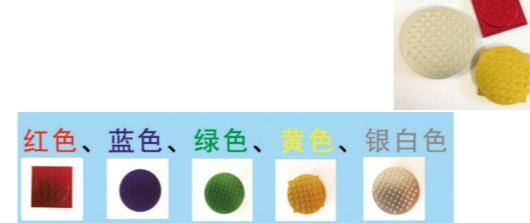
Model NO.: XW-LDT-009
 Brand: Leica
 Compatibility: CM1100、1510、1850、1900、3050系列
 Specifications: 20mm、30mm、35mm



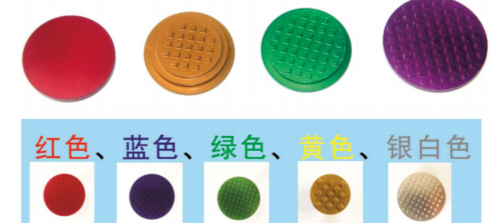
Model NO.: XW-LDT-010
 Brand: Leica
 Compatibility: CM1950
 Specifications: 20mm、30mm、40mm



Model NO.: XW-LDT-011
 Brand: Thermo
 Compatibility: 620E、620ME、620SME
 Specifications: 33mm、45mm



Model NO.: XW-LDT-012
 Brand: Thermo
 Compatibility: FSE、FE
 Specifications: 30mm、40mm、50mm



Special type

Model NO.: XW-LDT-013
 Customization

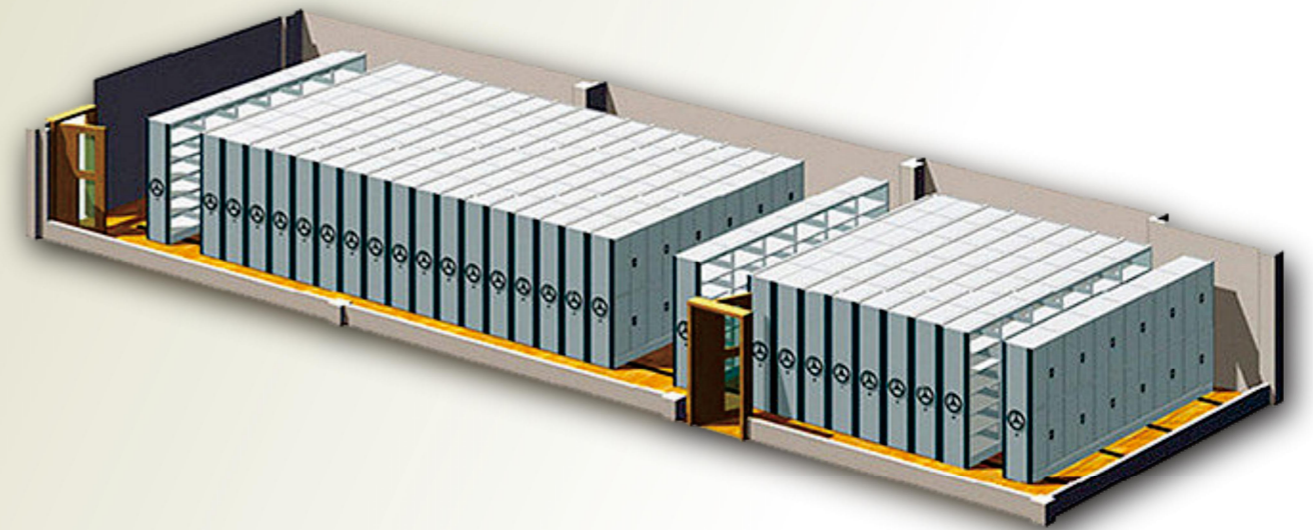


Cryostat Specimen disc that can be labeled

Brand: Leica
 Compatibility: CM1900、CM1950
 Note: Customization



Storage



Storage Systems

Features: The cabinet is made of 0.8mm Baosteel cold-rolled steel plate. Drawer HAS automatic return function, THE use of slot pulley, the starting point with high strength pulley, the other with high elastic shock cushion, can make the drawer closed to reduce the collision with the cabinet.

Block cabinet

Each set of 4 combinations, each combination of 5 drawers, a total of 20 drawers, about 16,500 paraffin blocks.



Slide storage cabinet

4 combinations, each with 9 drawers, total 36 drawers, approximately 55,000 slides



	Block cabinet
Cod.	XW-LK-003
Dim.	L515 W480 H1510mm
CY	16500PCS

	Slide storage cabinet
Cod.	XW-BP-003
Dim.	L515 W480 H1510mm
CY	55000PCS

Customization

- High quality SPCC Baosteel cold rolled steel plate, surface electrostatic powder spraying process
- New welding technology, smooth and bright surface
- When fully loaded, the dense storage frame can also keep moving smoothly
- With anti-toppling device
- All have locking function
- Upgrade to automatic networked management of pathology records (optional)
- High bearing capacity chassis and anti-corrosion ground rail
- The drawer is cushioned with shock pads .

